

RGE 19 W4M

RGE 18 W4M

RGE 17 W4M

TWP 8

TWP 8

TWP 7

TWP 7

RGE 19 W4M

RGE 18 W4M

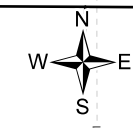
RGE 17 W4M



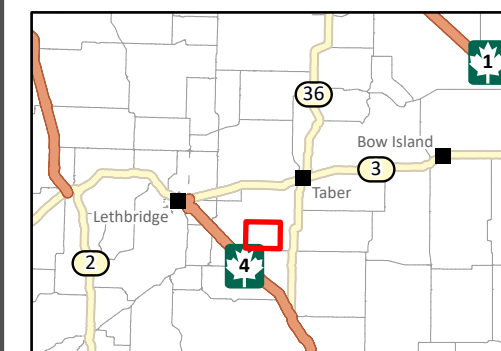
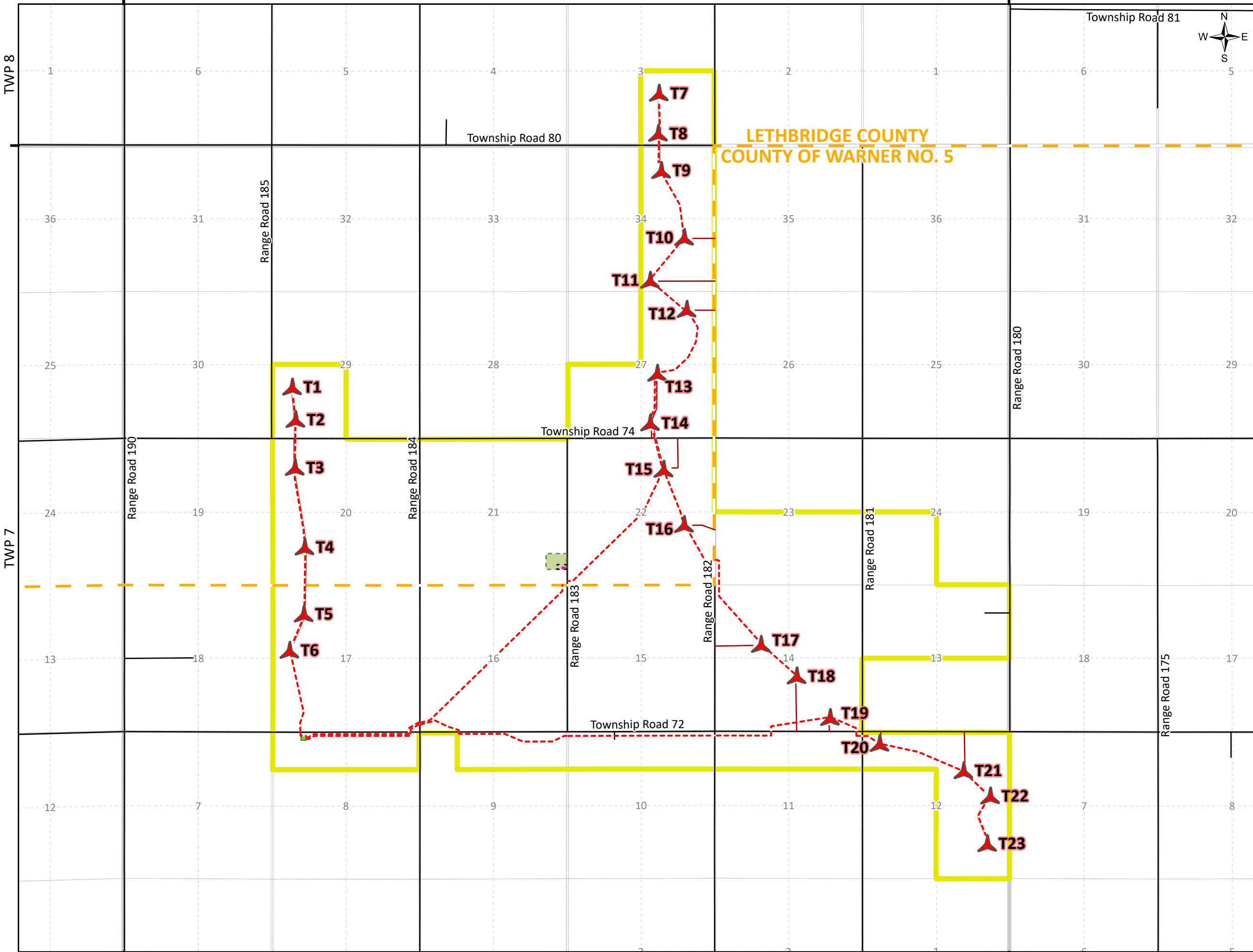
# STIRLING WIND PROJECT (SWP)

## Legend

- Project Boundary
- SWP Turbine Location
- SWP Underground Collector (34 kV)
- SWP New Access
- Substation Location
- O&M Building Location
- O&M Building Fence
- Temporary Laydown Area
- Township Boundary
- Section Boundary
- Quarter-section Line
- Road



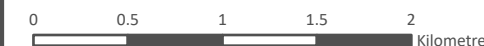
LETHBRIDGE COUNTY  
COUNTY OF WARNER NO. 5



### Map Notes:

1. Produced April 2022.
2. Coordinate system: NAD 1983 UTM Zone 12N.
3. Data sources include: AltaLIS, CanVec Series Topographic Data of Canada, ESRI.

Potentia, its employees and agents, do not undertake to guarantee the accuracy or completeness of the contents of this digital or hardcopy map file, including third party data sets used in this document, and will not be liable for any claims for damages or loss arising from their application or interpretation, by any party. It is not intended to replace a survey or be used for legal description. This map may not be reproduced without the permission of Potentia.



1:40,000 (At original document size of 11x17)