

**D15 Public Information Centre 2008**

Welcome  
to Our Public Information Centre



**Bala Falls**  
small **hydro** project



*... building on  
Bala's Legacy*

Artist Rendition by Forrec Ltd. (not to scale).

# Our New Plan for Bala Falls

Our Public Information Centre last August and subsequent meetings with cottager associations, municipal officials and individual landowners/occupants have been extremely helpful in enabling us to better understand the community's issues and concerns.

As originally conceived, people were concerned that the project might damage the site's character; restrict access to the waterfall and the site's scenic viewing points, affect the local fish habitat; and, impose traffic restrictions, during construction, that could affect the local economy.

## The New Plan: Key Features

After conducting more detailed engineering and field studies, we have confirmed that we are able to:

- **Move the power station** a considerable distance further south away from the south edge of the waterfall.
- Design the power station so that virtually all station facilities will lie **invisibly below grade**.
- **Create a park-like setting** in keeping with the site's natural beauty and character.
- **Ensure continued safe access** is maintained to the waterfall and the surrounding area.
- **Minimize local fish habitat disturbance** below the waterfall.
- **Avoid or minimize traffic disturbances** by scheduling key construction activities during off-season periods.



Artist Rendition by Forrec Ltd. (not to scale).

# Project Description

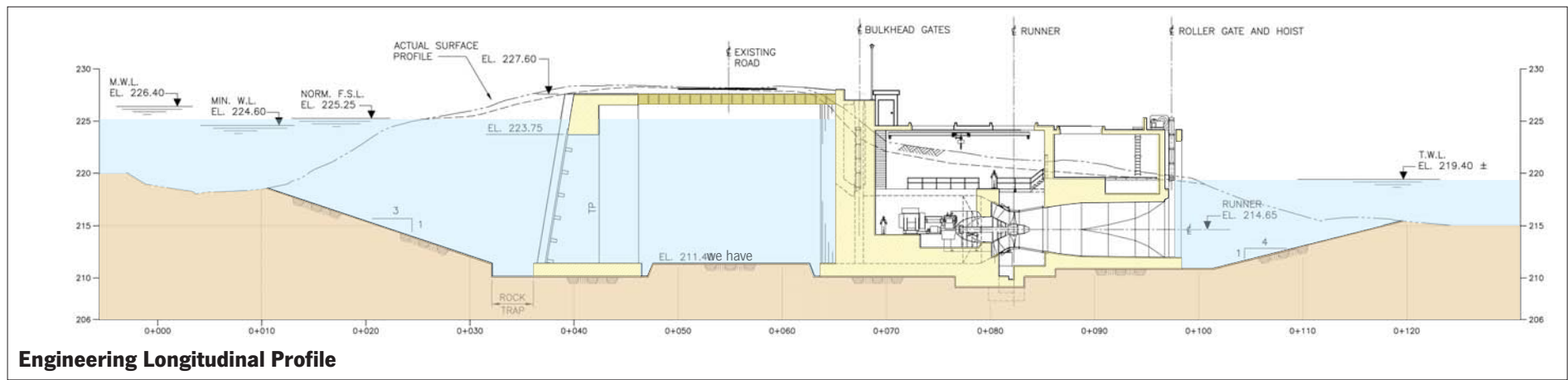
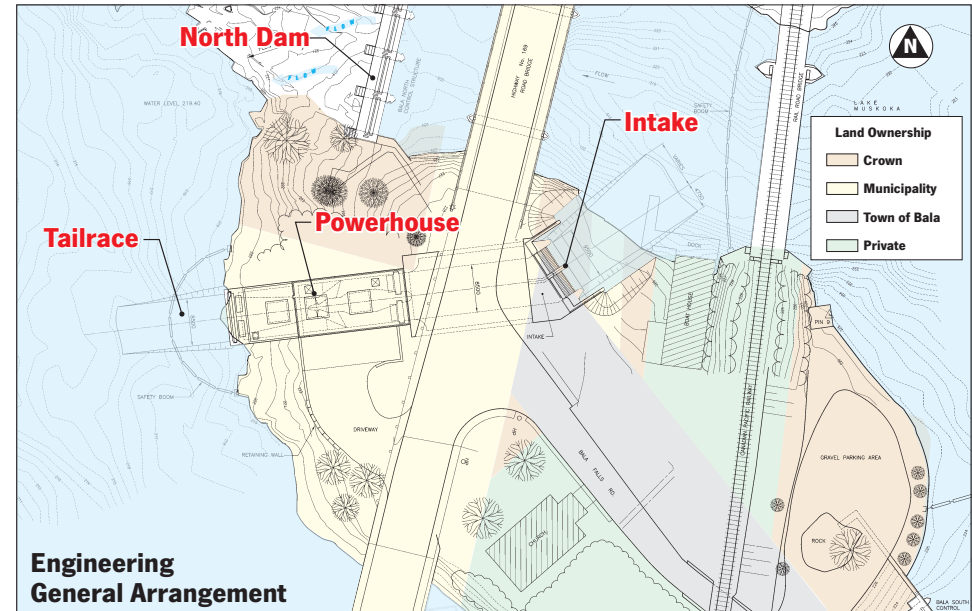
Swift River Energy Limited proposes to build, own and operate a 4.3 MW hydroelectric generating station adjacent to the south end of Bala's North Dam.

## Facility Components

- An **intake** structure, built on the river bottom to direct water into the powerhouse.
- A **powerhouse** containing the electricity generating and transformer equipment.
- A **tailrace** to return the water to the river.
- An **underground 44 kV powerline** to deliver the station's electricity to the local distribution grid.

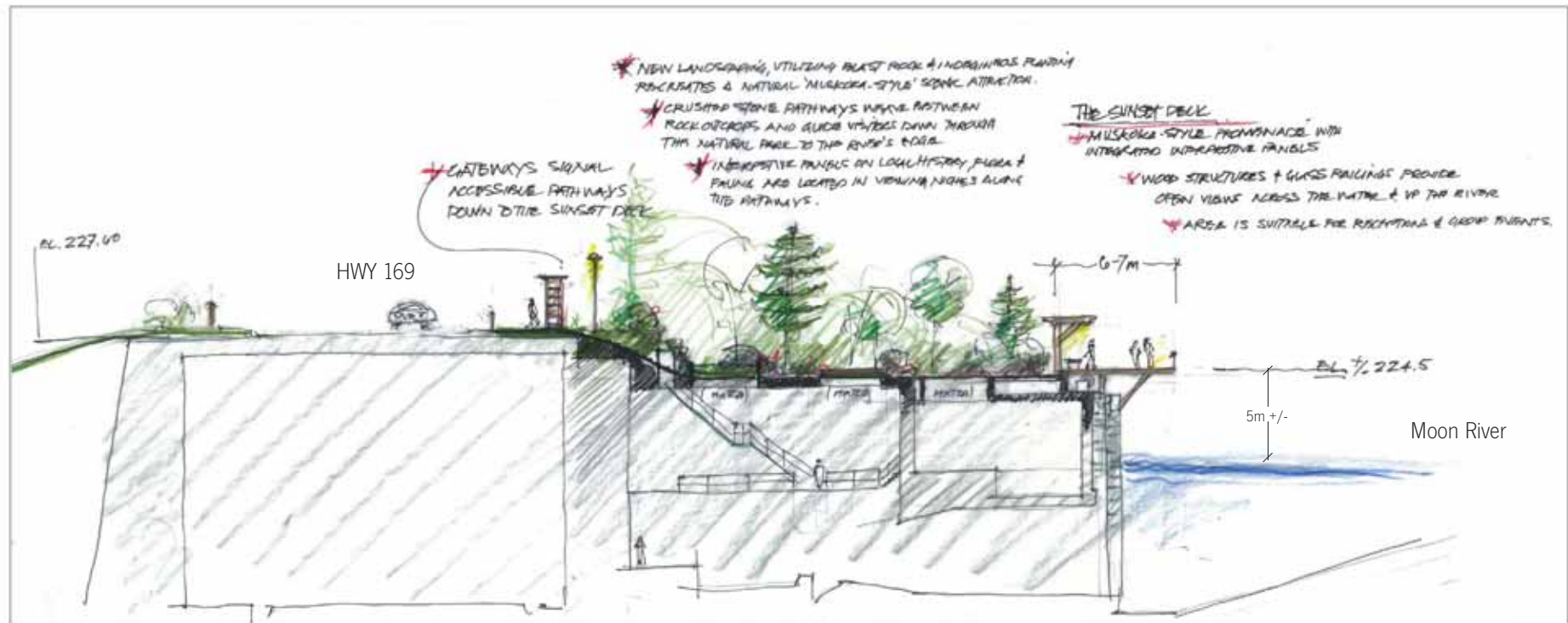
## Design Features

- With most of the station's structures located below grade, and, a comprehensive plan to landscape the site, **the power station will be virtually invisible.**
- The **existing dam** structure will remain **unchanged.**
- **Water flows** will strictly **comply** with the **Muskoka River Water Management Plan.**
- The site's traditional character and scenic beauty will be **preserved and enhanced.**
- **Safe access** to the site and surrounding area will be improved.



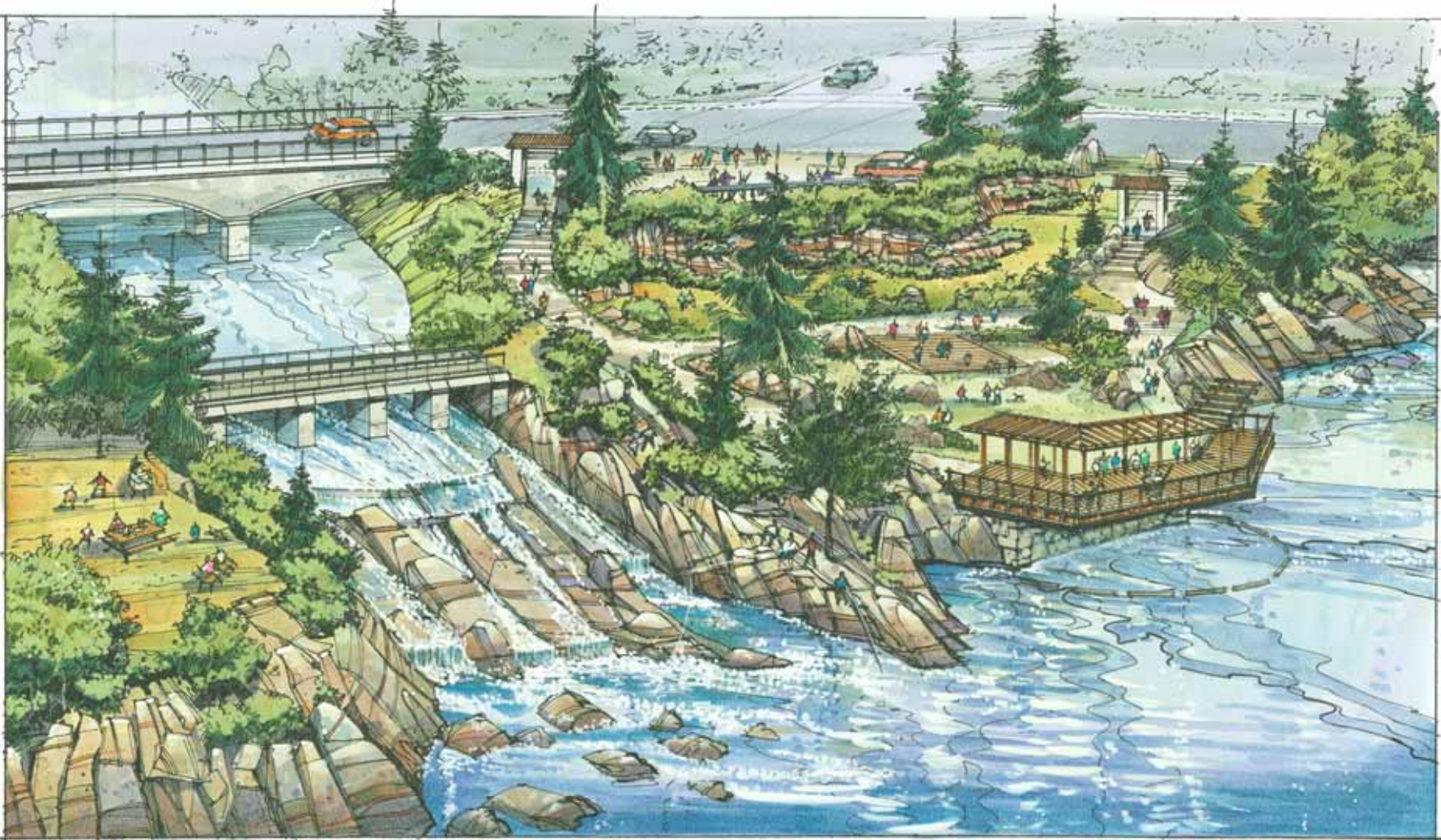


# Proposed Landscape Plan: Profile View (looking south)



Artist Rendition by Forrec Ltd. (not to scale).

# Proposed Landscape Plan



Artist Rendition by Forrec Ltd. (not to scale).



# Proposed Landscape Plan: Plan View



Artist Rendition by Forrec Ltd. (not to scale).

## The Bala Falls Small Hydro Project is part of a province-wide effort to:

- **develop** Ontario's untapped sources of **renewable generation**,
- **meet** the **growing demand** for electricity, and
- fulfill the Province's commitment to **eliminate** its dependency on **coal fired generation**.

**Coal-fired generation** is considered to be a **major contributor to air pollution in Ontario**. According to the Ontario Medical Association, air pollution in Ontario was considered responsible for the following in 2005:

- 5,829 premature deaths
- 16,807 hospital admissions
- 59,696 emergency room visits, and
- \$7.8 billion in total health care costs.

### Hydroelectric generation:

- is a **clean, renewable**, highly **efficient** (>90%) technology,
- a virtually **emission free** source of electricity generation,
- can be used to **offset coal generation** requirements, and
- estimated development **potential** in Ontario > **6000 MW** (redevelopment and new sites).

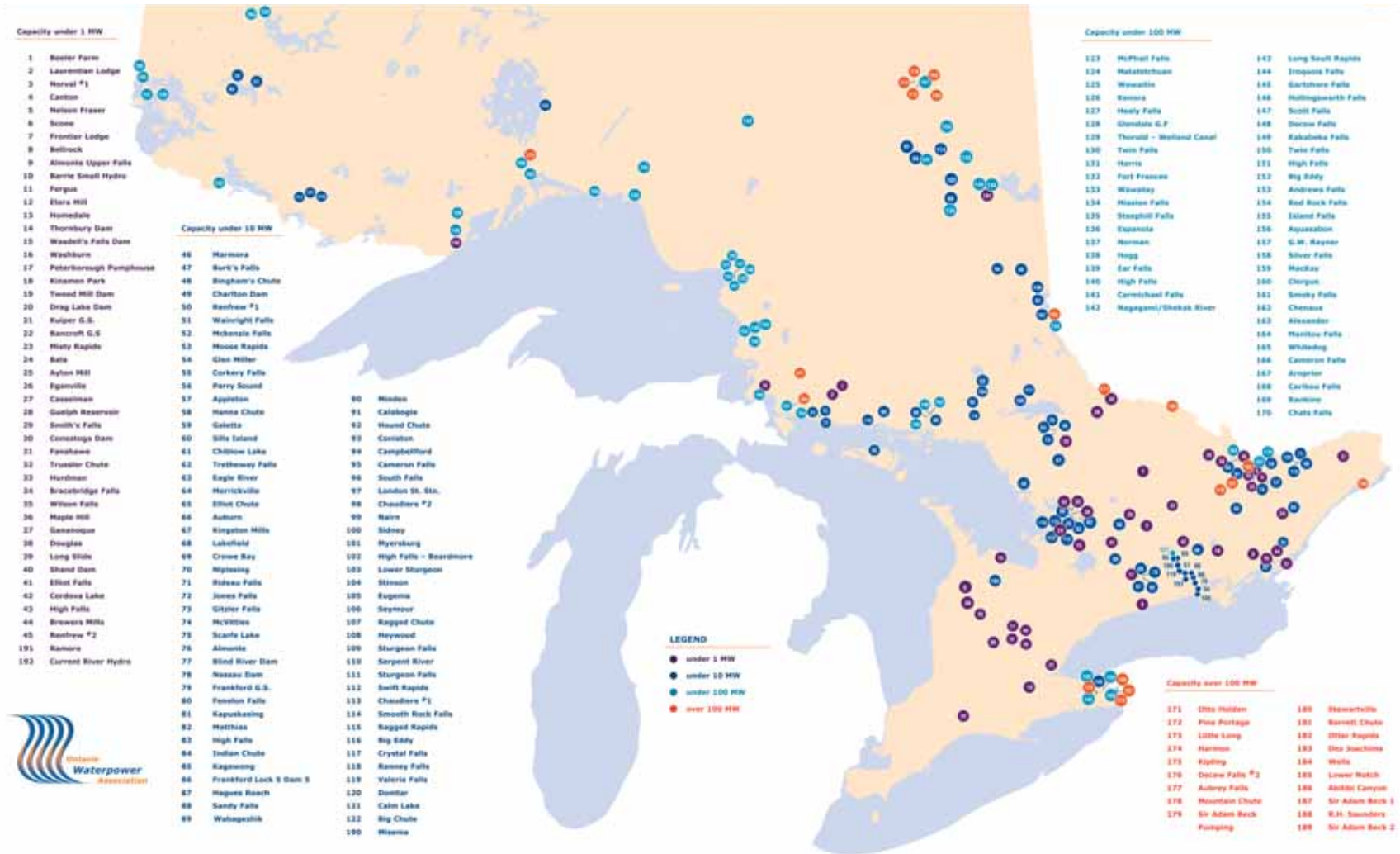




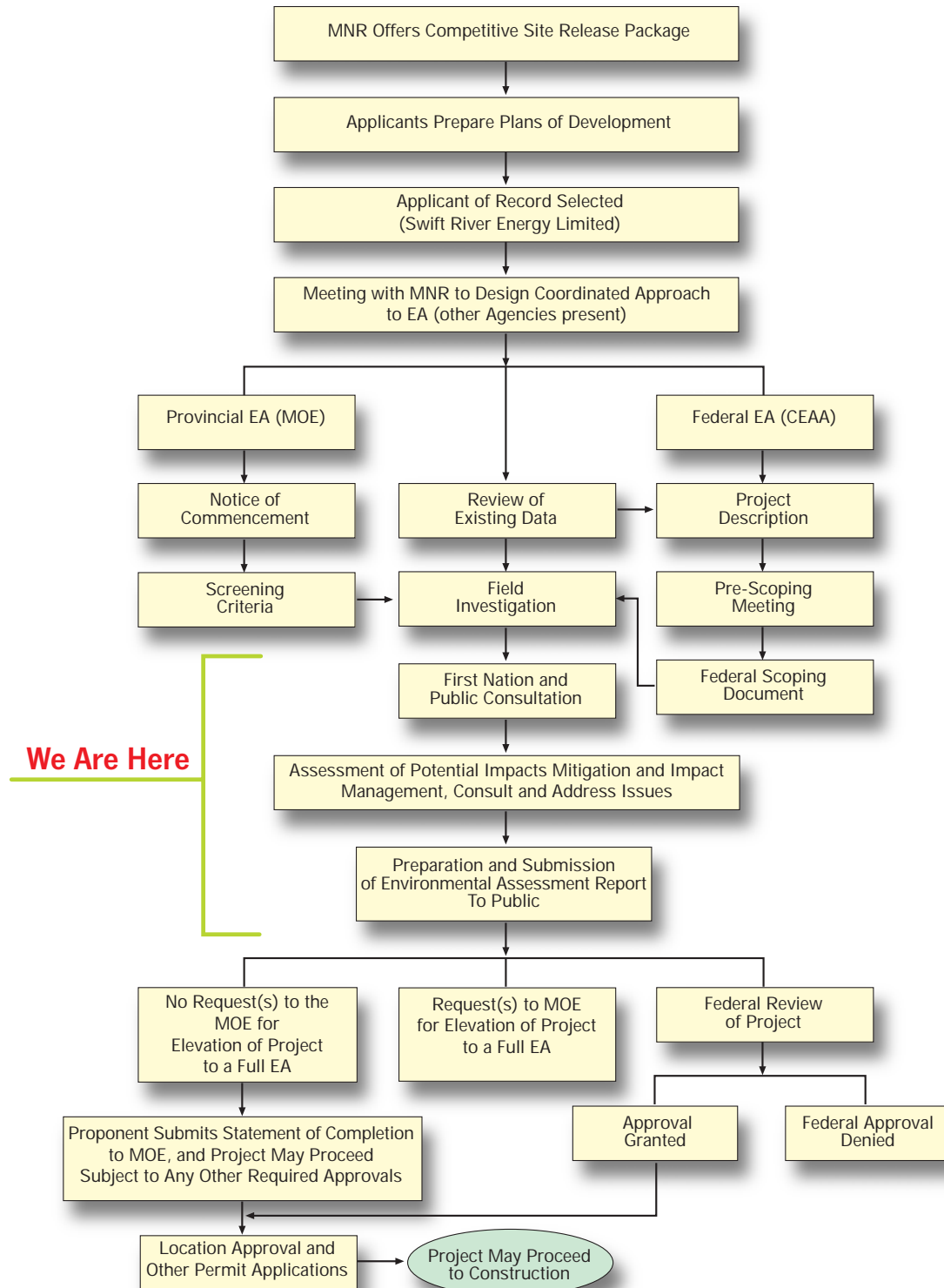
# Waterpower in Ontario

## Waterpower Facilities in Ontario

Source: Ontario Waterpower Association



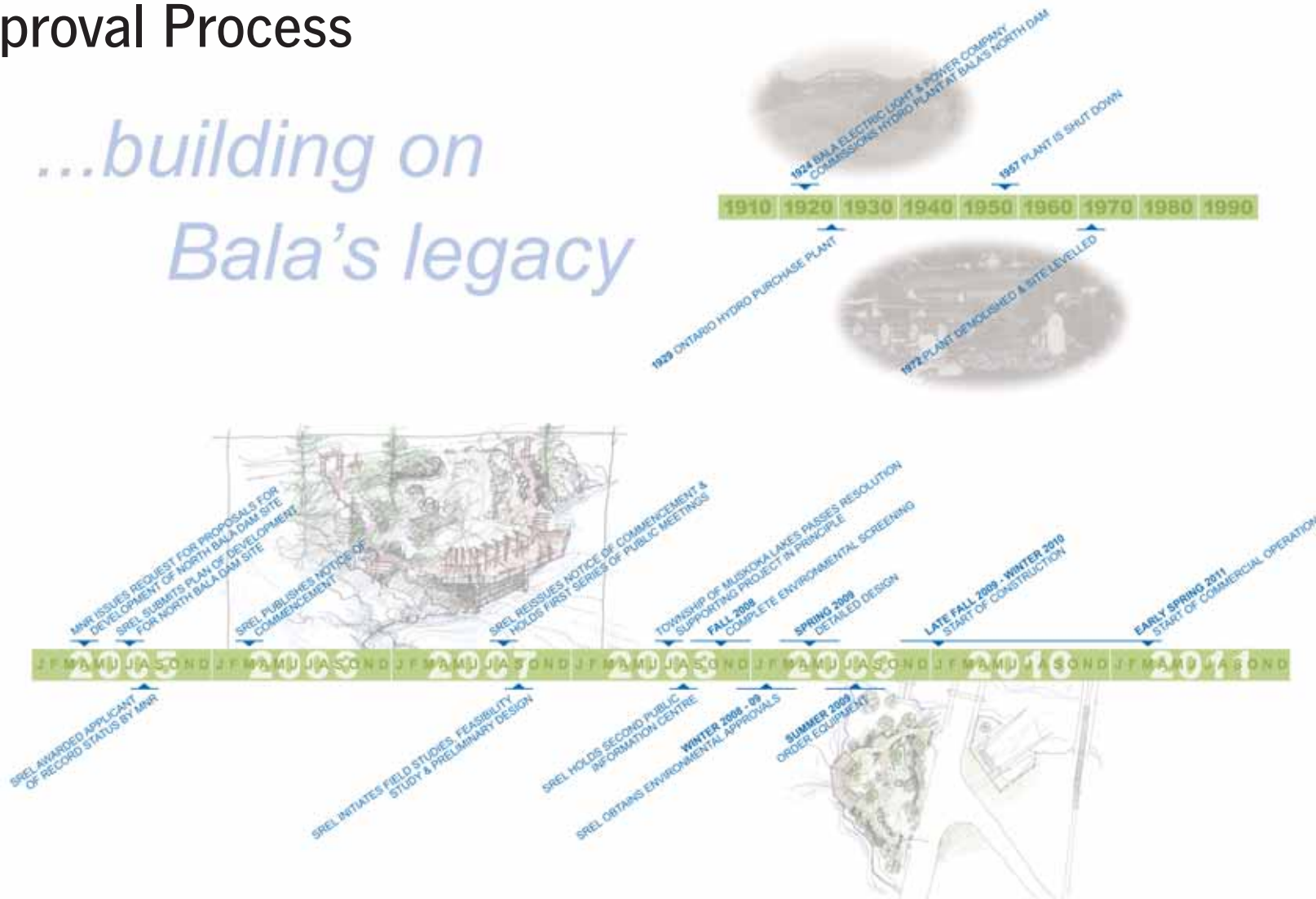
## Environmental Assessment / Screening Process



# Project Development / Approval Process



*...building on  
Bala's legacy*



## The Project Team



### Swift River Energy Limited

Swift River Energy Limited (SREL) was founded in 2004 to develop new hydro facilities in Ontario. It is owned by a consortium of senior, experienced developers and financiers. SREL calls upon the expertise of its four founders who have built other power plants in Ontario, developed over 6 million square feet of office space in the Toronto commercial market, and held executive positions in a number of Ontario firms. SREL's Chief Operating Officer is a past Chairman of the Ontario Waterpower Association, and he was founder and President of the firm that built the Misema small hydro plant in Englehart, Ontario.

SREL is providing the necessary financing for this project. Its partners are cognizant of the sensitivity of the Bala area as a tourist, cottage and environmentally sensitive area. Three of its four founders are long-term area cottagers, and one has recently served as cottage association President downstream of the project. They bring a heightened awareness of the special and unique needs of this project. SREL is pleased to have selected Hatch Energy for engineering, environmental screening and project management, and have enlisted Bracebridge Generation, owners of a number of small hydro plants in the area, including the recent and successful High Falls expansion, as advisors and future operators for this plant.



### Hatch Energy

Since 1924, Hatch Energy (formerly Acres International), has provided its clients with imaginative and practical engineering and management solutions in the hydroelectric field out of its Niagara Falls, Ontario office and other office locations. Hatch Energy has extensive experience in the design and construction of new waterpower facilities in addition to the redevelopment and expansion of existing ones. Recent accomplishments included design, environmental assessment and project management services for many small hydro project and wind farms throughout the Province and across Canada.

These engineering services have taken many forms, tailored to satisfy clients' needs, including services required for the execution and implementation of the North Bala small hydro project.

Hatch Energy previously completed the dam safety assessment of the Bala dams for MNR, and the Water Management Plan for the Muskoka River System.

### Bracebridge Generation LTD.

### Bracebridge Generation

Swift River Energy Limited has entered into an understanding with Bracebridge Generation Ltd. to operate the North Bala power project, including the powerhouse and dam structure.

Bracebridge Generation Ltd. has been in operation since 1894. Bracebridge Generation Ltd., a locally owned and operated firm, is a subsidiary company of Lakeland Holding Ltd. whose shareholders include the municipalities of Bracebridge, Burk's Falls, Huntsville, Magnetawan and Sundridge. Their current assets include four hydro generation facilities in the Bracebridge area.

Bracebridge Generation's services include the generation of environmentally friendly local electricity, while maintaining a high degree of safety and operating standards.



### Forrec

Forrec Ltd. is a global leader in the planning and design of large-scale cultural tourism and entertainment attractions. We work with many different organizations, both local and international, on a diverse range of projects across all cultural tourism sectors. These include landmark entertainment attractions such as Universal Studios' theme parks in Orlando and Dubai, international science centers and museums in Shanghai, large-scale urban and resort environments such as Muskoka Wharf, theme and water parks in the USA including Nickelodeon, Dollywood and Legoland, and branded hospitality and retail environments like the Hardrock Café and the Mall of America.



## Plant Operations and Muskoka River Water Management Plan

The plant operations must, and will, comply with this plan.

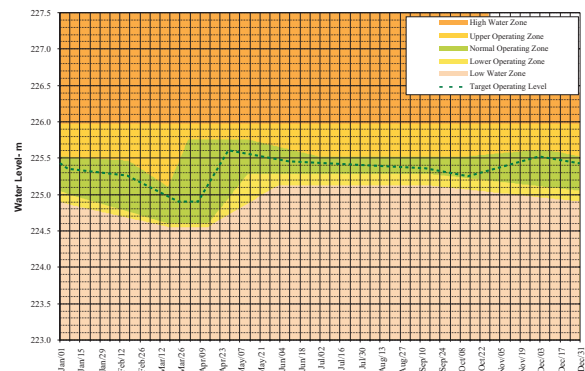
### Lake Muskoka Water Levels

The Muskoka River Water Management Plan specifies that Lake Muskoka water levels [controlled by Bala's north and south dams and Burgess Generating Station], must operate within the following parameters.

Target Operating Level	224.9 to 225.6 m
Normal Operating Zone (NOZ)	224.6 to 225.75 m
Absolute Range	224.55 to 225.97 m
Summer* Range (Typical)	225.28 to 225.65 m
Winter Drawdown	225.52 to 224.9 m
Flood Allowance (lake/river)	225.75 to 225.97 m/368.1 m <sup>3</sup> /s(spring) /283.0 m <sup>3</sup> /s (summer)
Minimum Discharge	6 m <sup>3</sup> /s summer target (inclusive of 4 m <sup>3</sup> /s from Burgess GS)
Natural Environment Constraints	Lake trout spawning shoals
Social Constraints	Flows for walleye spawning at Moon Falls Extensive high value shoreline development with infrastructure ranging from 225.64 to 226.44 m. Potential for spring ice damage to infrastructure. Low level can impede navigation access at Port Carling locks.
Other	High lake levels and high flows from Port Carling dam can cause flooding of marinas on Indian River Winter drawdown undertaken for downstream hydropower production

\* Summer period defined as March 16 to September 15.

Lake Muskoka Operating Plan



### Muskoka River-Bala Reach Water Levels

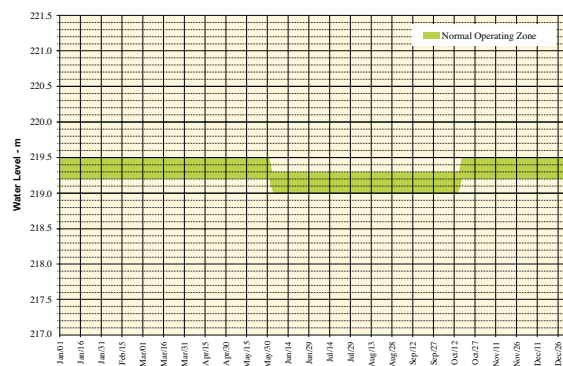
The Muskoka River Water Management Plan specifies that the Muskoka River-Bala Reach water levels [controlled by Bala's north and south dams and Burgess Generating Station, Ragged Rapids Generating Station (OPG) and the Moon River Control Dam (MNR)], must operate to within the following parameters.

Normal Operating Zone (NOZ)	219.0 to 219.3 m summer* 219.2 to 219.5 m spring, fall & winter
Winter Drawdown	None
Flood Allowance	None. However, the facility has limited discharge capacity and cannot control river levels beyond the specified High Flow Trigger**. Levels may exceed the upper extent of the NOZ at this time.
Maximum Daily Flow	88.9 m <sup>3</sup> /s
High Flow Trigger	85 m <sup>3</sup> /s (at Bala Dams)
Low Flow Trigger	3 m <sup>3</sup> /s
Natural Environment Constraints	Walleye Spawning at Moon Falls in the spring (approximately April 15 to June 1 annually) Adequate flow in Moon River during the summer low flow period
Social Constraints	High water levels in Bala Reach may affect septic beds and inundate docks and cottage crawl spaces. Low water levels in Bala Reach may restrict access to docks and properties.
Other	Moon Chutes, located at the downstream end of Bala Reach, restricts outflow from Bala Reach at flows in excess of 85 m <sup>3</sup> /s resulting in progressively higher water levels as flows continue to increase. Flows and levels in Bala Reach are managed jointly by MNR and OPG. Optimum flow withdrawal for waterpower generation at the downstream Musquash stations (Ragged Rapids and Big Eddy) is 85 m <sup>3</sup> /s.

\* Summer period defined as June 1 to October 15.

\*\* High Flow Trigger refers to flow above which flooding occurs and is beyond the discharge capability of the facility.

Bala Reach, Ragged Rapids and Moon Dam Operating Plan





# Environmental Assessment

## Baseline Data Collection

A comprehensive environmental data collection program was completed in the study area in order to assess the project's potential impacts. Studies included:

- Aquatic Habitat
- Fish Community
- Benthic Invertebrate Community
- Water Quality
- Walleye (Pickerel) Spawning
- Ambient Noise
- Archaeological Assessment

### Aquatic Habitat Assessment

(September 2007 and May 2008)

The lake and river bottom above and below Bala's North Dam was examined to determine which areas might support fish and benthic invertebrates habitat.

- Based on sampling studies the rocky areas below the North and South dams provide the best habitat to support benthic invertebrate production, bait and game fish foraging, spawning and nursery habitat for game fish. These are critical habitats that are important for the local fish community. These areas will be maintained during project construction and operation
- Other shoreline areas in the study area, including in the proposed powerhouse and tailrace area, provide a range of general habitat functions including residence and foraging habitat for a variety of fish and invertebrate species. However, areas providing these functions are common throughout the study area.

#### Fish Community (September 2007)

During the study, 81 fish from 9 species were caught and identified. They included:

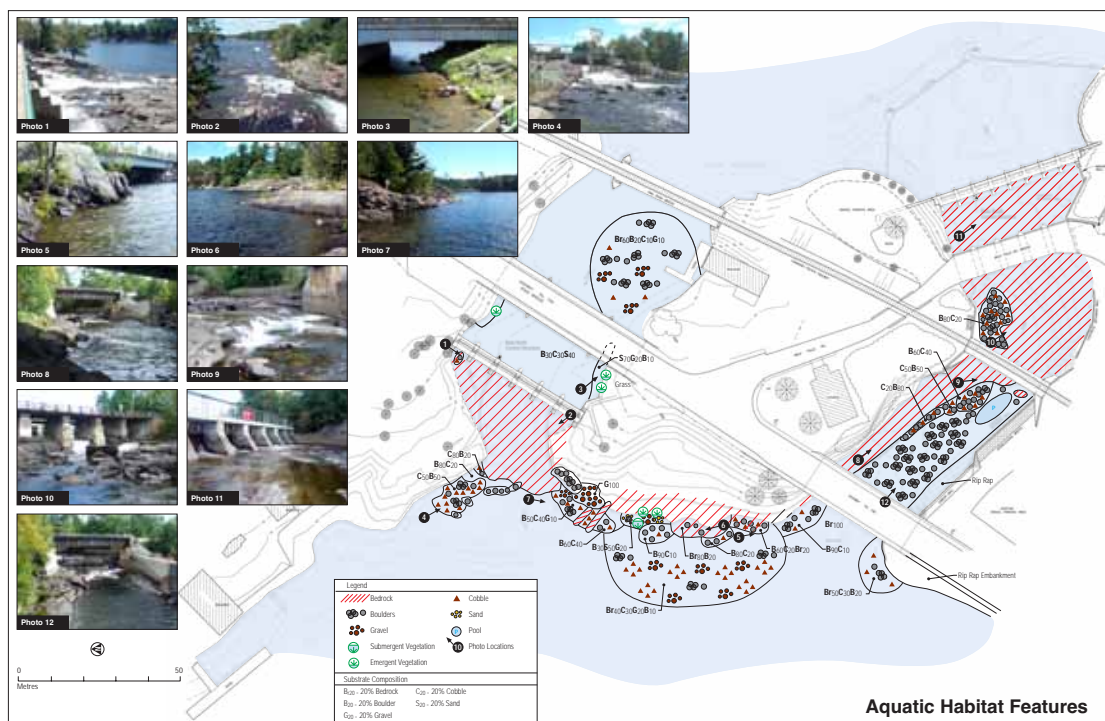
- smallmouth bass
- largemouth bass
- yellow perch
- rock bass
- pumpkinseed
- emerald shiner
- logperch
- hornyhead chub
- longnose dace

#### Benthic Invertebrate Community (October 2007)

Benthic invertebrates serve as food for fish. Dominant invertebrates caught in the study area included:

- black flies and caddisflies, (riffle areas downstream of dams).
- a flatworms, midges, snails and clams, (shoreline along tailrace area).

These are typical species for these types of habitat. No significant impact on the invertebrate community is anticipated from the project.



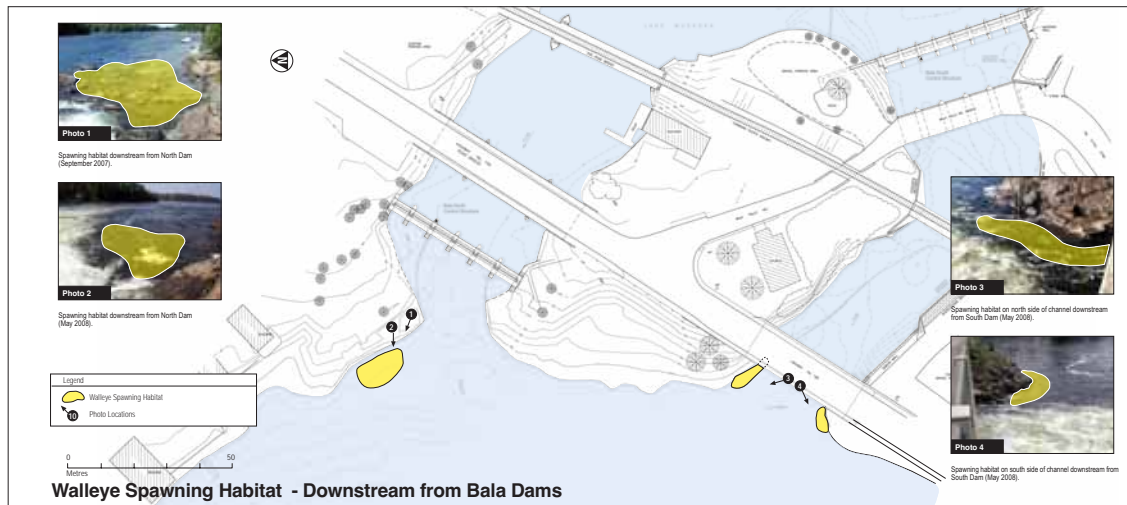
# Environmental Assessment

## Baseline Data Collection

### Spring Walleye Spawning Survey

(April - May 2008)

Walleye spawning surveys in the study area included visual observations/counts of spawning walleye, collection of eggs and identification of suitable conditions (e.g. substrate, water depth, velocity, temperature). Identified spawning areas are shown on the map below.



### Ambient Noise Level Monitoring

(September 2007 – May 2008)

The existing background noise levels at nearby Points of Reception\* were measured. Since the project will be located in a Class 2 Urban area, the maximum allowable sound level limit at any point of reception is 45dBA. Requisite measures to ensure compliance with noise limits will be implemented.

Typical Sound Levels	
30 - 40 dBA	a whisper to low talking
40 - 50 dBA	a quiet living room in a home
50 - 60 dBA	a clothes dryer

\* Point of Reception - any point on the premises of a person where sound or vibration originating from other than those premises is received (MOE, 1995).

### Archaeological Assessment

(June 2008)

A Stage 1 Archaeological Assessment was completed in spring 2008. The Stage 1 report will be submitted to and is subject to approval by the Ministry of Culture. A Stage 2 archaeological assessment was recommended for land determined to have archaeological potential and likely to experience impact. The Stage 2 is also subject to Ministry of Culture approval. This evaluation will commence in late summer.

### Water Quality Assessment

(September, October 2007 and May 2008)

Surface water from upstream and downstream of Bala's North Dam was analyzed for a number of parameters. Based on the studies conducted, surface water quality in the study area has been found to meet the Provincial Water Quality Objectives (PWQO, see table below) for the Protection of Aquatic Life. No change in water quality is anticipated from the facility operation.

Parameter	Units	Upstream dam	Downstream dam	PWQO
pH		7.61	7.61	6.5 - 8.5
Water Temperature	°C	12.13	11.97	
Dissolved Oxygen	mg/L	10.25	10.34	4
Conductivity	uS/cm	50.67	50.67	
Total Dissolved Solids	mg/L	37.00	36.00	
Total Suspended Solids	mg/L	7.00	7.00	
Turbidity (field)	NTU	2.00	2.11	
Total Phosphorus	mg/L	0.01	0.01	0.03
Nitrite	mg/L	<0.10	<0.10	
Nitrate	mg/L	0.21	0.19	
Total Kjeldahl Nitrogen	mg/L	0.26	0.29	
Sulphate	mg/L	6.00	6.00	
Chloride	mg/L	6.67	6.67	
Aluminum	mg/L	0.05	0.01	0.075
Barium	mg/L	0.01	0.01	
Beryllium	mg/L	<0.001	<0.001	0.011
Boron	mg/L	<0.01	<0.01	0.2
Cadmium	mg/L	<0.0001	<0.0001	0.0002
Chromium	mg/L	0.00	1.00	
Cobalt	mg/L	<0.0002	<0.0002	0.0009
Copper	mg/L	<0.001	<0.001	0.005
Iron	mg/L	<0.03	0.06	0.3
Lead	mg/L	<0.001	<0.001	0.005
Manganese	mg/L	<0.01	<0.01	
Mercury	Mg/L	<0.0001	<0.0001	0.0002
Molybdenum	mg/L	<0.005	<0.005	0.04
Nickel	mg/L	<0.005	<0.005	0.025
Silicon	mg/L	1.57	1.60	
Silver	mg/L	<0.0001	<0.0001	0.0001
Strontium	mg/L	0.03	0.03	
Thallium	mg/L	<0.0001	<0.0001	0.0003
Titanium	mg/L	<0.01	<0.01	
Vanadium	mg/L	<0.001	<0.001	0.006
Zinc	mg/L	<0.01	<0.01	0.03



# Thank You for Coming.

■  
Your input is important to us and a key component of the project's planning and approval process.

■  
Please complete a comment sheet before leaving.

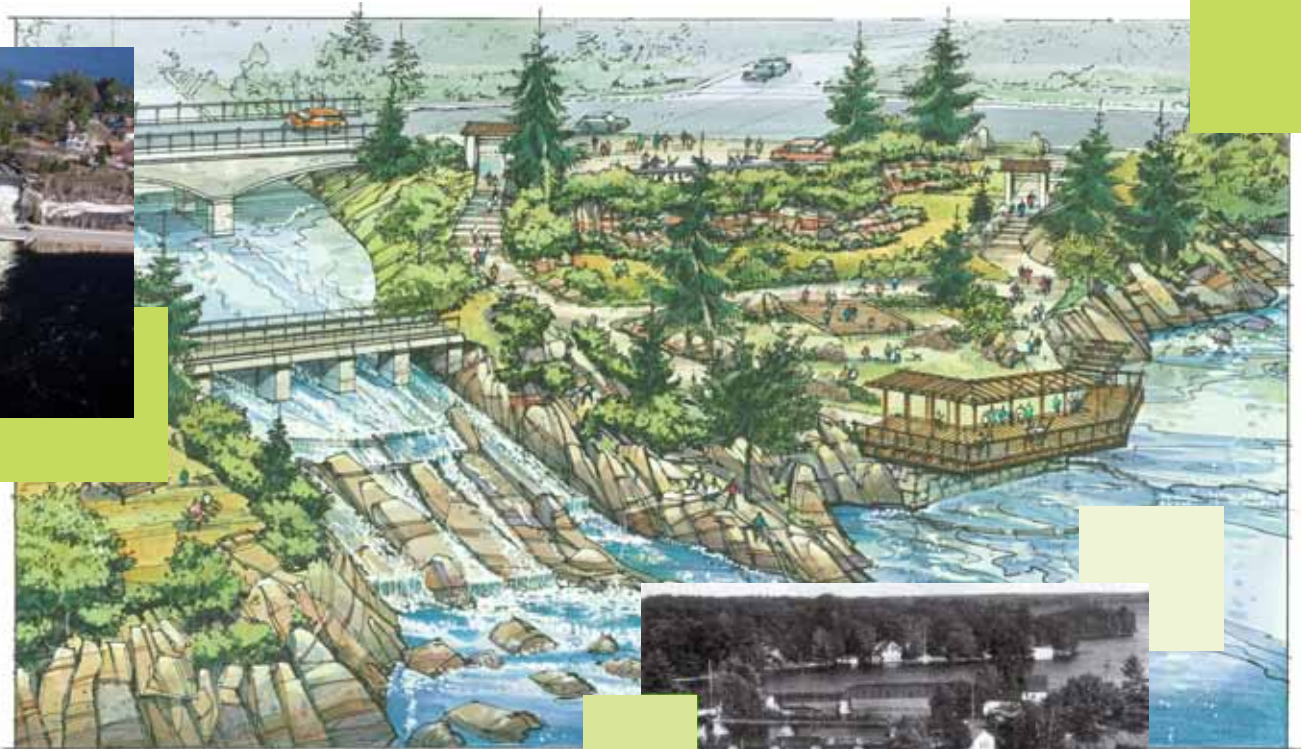
■  
To stay informed about project developments, we encourage you to visit our website at

[www.balafalls.ca](http://www.balafalls.ca)

# Building on Bala's Legacy



**BalaFalls**  
small hydro project



Artist Rendition by Forrec Ltd. (not to scale).





# Project Area



**Bala Falls**  
small hydro project



# North Bala Small Hydro Project Environmental Screening Report

## Table of Contents

### 1. INTRODUCTION

- 1.1. PROJECT BACKGROUND
- 1.2. PROJECT DESCRIPTION & COMPONENTS
- 1.3. PROJECT LOCATION AND STUDY AREA
- 1.4. PURPOSE AND NEED
- 1.5. PROJECT ALTERNATIVES CONSIDERED
- 1.6. REGULATORY REQUIREMENTS

### 2. EXISTING ENVIRONMENT

- 2.1. NATURAL ENVIRONMENT
  - 2.1.1. Climate
  - 2.1.2. Physiography, Topography and Geology
  - 2.1.3. Hydrology
  - 2.1.4. Water Quality
  - 2.1.5. Fish Habitat and Fish Community
  - 2.1.6. Vegetation & Wildlife
- 2.2. SOCIOECONOMIC ENVIRONMENT
  - 2.2.1. Municipal Profile
  - 2.2.2. Land Use Policies and Zoning By-laws
  - 2.2.3. Local Land Use and Tenure
  - 2.2.4. Population and Economic Profile
    - 2.2.4.1. Recreational and Tourism
  - 2.2.5. Cultural / Heritage Resources and Archaeological Sites
  - 2.2.6. Infrastructure
  - 2.2.7. Existing Sound Levels
  - 2.2.8. Lands and Resources Used for Traditional Purposes by Aboriginal Persons
- 2.3. SUMMARY OF VALUED ECOSYSTEM COMPONENTS

### 3. EXISTING WATERPOWER FACILITIES AND OTHER WATER CONTROL STRUCTURES

### 4. PUBLIC, STAKEHOLDER, AGENCY & FIRST NATION CONSULTATION

- 4.2. STAKEHOLDER CONSULTATION
- 4.3. AGENCY CONSULTATION
- 4.4. FIRST NATION CONSULTATION
- 4.5. SUMMARY OF ISSUES ARISING FROM CONSULTATION
  - 4.5.1. Natural Environmental Issues
  - 4.5.2. Socioeconomic Environmental Issues

### 5. BASELINE DATA COLLECTION PROGRAM

- 5.1. DATA GAPS
  - 5.1.1. Natural Environment
  - 5.1.2. Socioeconomic
- 5.2. BASELINE DATA COLLECTION PROGRAM
  - 5.2.1. Natural Environment
  - 5.2.2. Socioeconomic Environment

### 6. IMPACT ASSESSMENT AND PROPOSED MITIGATION DURING PROJECT CONSTRUCTION

- 6.1. SOURCES OF EFFECTS
- 6.2. EFFECTS AND MITIGATION - NATURAL ENVIRONMENT
  - 6.2.1. Geology/Soils
  - 6.2.2. Air Quality
  - 6.2.3. Groundwater
  - 6.2.4. Hydrology
  - 6.2.5. Water Quality
  - 6.2.6. Aquatic Environment
  - 6.2.7. Terrestrial Environment
- 6.3. EFFECTS AND MITIGATION - SOCIO-ECONOMIC ENVIRONMENT
  - 6.3.1. Public Access
  - 6.3.2. Health and Safety
  - 6.3.3. Traffic
  - 6.3.4. Recreation and Tourism
  - 6.3.5. Local Residents
  - 6.3.6. Sound Levels
  - 6.3.7. Aesthetics and Signage
  - 6.3.8. Employment and Economic Opportunities
  - 6.3.9. Infrastructure
  - 6.3.10. Land Use
  - 6.3.11. Cultural/Heritage Resources and Archaeological Sites
  - 6.3.12. Lands and Resources Used for Traditional Purposes by First Nations
  - 6.3.13. Waste Management
- 6.4. SUMMARY OF IMPACTS AND MITIGATION DURING PROJECT CONSTRUCTION

### 7. EFFECT OF THE ENVIRONMENT ON THE PROJECT DURING CONSTRUCTION

- 7.1. PRECIPITATION AND FLOODING
- 7.2. EXTREME WINTER CONDITIONS
- 7.3. EXTREME SUMMER CONDITIONS
- 7.4. EARTHQUAKES
- 7.5. SUMMARY OF EFFECTS OF THE ENVIRONMENT ON THE PROJECT DURING CONSTRUCTION

### 8. IMPACT ASSESSMENT AND PROPOSED MITIGATION DURING FACILITY OPERATION

- 8.1. SOURCES OF EFFECTS
- 8.2. EFFECTS AND MITIGATION - NATURAL ENVIRONMENT
  - 8.2.1. Hydrology
  - 8.2.2. Groundwater
  - 8.2.3. Water Quality
  - 8.2.4. Aquatic Resources
  - 8.2.5. Terrestrial Biota
- 8.3. EFFECTS AND MITIGATION - SOCIOECONOMIC ENVIRONMENT
  - 8.3.1. Public Access
  - 8.3.2. Health and Safety
  - 8.3.3. Traffic
  - 8.3.4. Recreation and Tourism
  - 8.3.5. Local Residents
  - 8.3.6. Sound Levels
  - 8.3.7. Aesthetics and Signage
  - 8.3.8. Employment and Economic Opportunities
  - 8.3.9. Infrastructure
  - 8.3.10. Land Use
    - 8.3.11. Cultural/Heritage Resources and Archaeological Sites
    - 8.3.12. Lands and Resources Used for Traditional Purposes by First Nations
    - 8.3.13. Waste Management
- 8.4. FACILITY DECOMMISSIONING
- 8.5. SUMMARY OF OPERATIONAL EFFECTS AND MITIGATION

### 9. CUMULATIVE EFFECTS ASSESSMENT

- 9.1. CUMULATIVE EFFECTS
  - 9.1.1. Past Activities
  - 9.1.2. Present Activities
  - 9.1.3. Future Activities/Projects
- 9.2. SIGNIFICANCE OF CUMULATIVE ENVIRONMENTAL EFFECTS

### 10. PROPOSED OPERATING PLAN

### 11. ENVIRONMENTAL MONITORING PROGRAMS

- 11.1. PRE-CONSTRUCTION CHECKLIST
- 11.2. CONSTRUCTION MONITORING
- 11.3. OPERATIONAL MONITORING

### 12. ENVIRONMENTAL PERMITS AND APPROVALS

### 13. SCREENING CONCLUSION

### 14. AMENDMENT TO EXISTING MUSKOKA RIVER WATER MANAGEMENT PLAN



## Project Benefits

- A capital expenditure of approximately \$23 million.
- Construction labour will be retained locally, to the extent possible.
- Material purchases and construction labour force spending will benefit the area over the 12 to 18 month construction period.
- More than \$300,000 to be spent, locally, on annual operation and maintenance.
- A new source of electricity generation to strengthen Bala's local electricity distribution grid.
- Improved coordination and control of the Muskoka River's water levels.
- The creation of a safe and accessible viewing area that will attract visitors to this new 'clean and green' source of power generation, and, to the scenic vistas surrounding Bala's legendary waterfalls.

# IMPRESSIONS OF SWIFT RIVER ENERGY'S PROPOSED BALA FALLS SMALL HYDRO PROJECT

August 13, 2008

Please take a minute to think about the following statements. You can do this by thinking of your level of agreement on a scale from 1 to 10, where "1" means you strongly disagree and "10" means you strongly agree. Please circle the number under each question that best expresses your agreement.

1. How did you learn about this Public Information Centre?

- Newspaper Advertisement                       Letter  
 Flyer                                                       Word of Mouth  
 Other: \_\_\_\_\_

2. Do you live in the Bala area?               Yes (If yes, please specify)               No

- Permanent                       Seasonal                       Tourist

3. Do you make use of the Bala Falls area?               Yes (If yes, please specify)               No

- Scenic viewing               Boating                       Swimming                       Fishing  
 Supplies/Provisioning               Other (explain) \_\_\_\_\_

4. I now have a better understanding of Swift River Energy's proposed Bala Falls Small Hydro Project.

**Strongly  
Disagree**

**1      2      3      4      5      6      7      8      9      10**

**Strongly  
Agree**

5. Before coming to this Public Information Centre, my questions regarding this proposed electric generating station were:

---

---

---

---

---

6. After having attended this Public Information Centre, I am satisfied my questions have been addressed.

**Strongly  
Disagree**

**1      2      3      4      5      6      7      8      9      10**

**Strongly  
Agree**

(continued)

7. The approach Swift River Energy proposes effectively addresses:

		<b>Strongly Disagree</b>								<b>Strongly Agree</b>	
		<b>1</b>	<b>2</b>	<b>3</b>	<b>4</b>	<b>5</b>	<b>6</b>	<b>7</b>	<b>8</b>	<b>9</b>	<b>10</b>
a)	visual aesthetics	1	2	3	4	5	6	7	8	9	10
b)	noise concerns	1	2	3	4	5	6	7	8	9	10
c)	recreational uses	1	2	3	4	5	6	7	8	9	10
d)	neighbouring land uses	1	2	3	4	5	6	7	8	9	10
e)	safety concerns	1	2	3	4	5	6	7	8	9	10

8. I am satisfied with the scope of the environmental report Swift River Energy intends to prepare.

	<b>Strongly Disagree</b>								<b>Strongly Agree</b>	
	<b>1</b>	<b>2</b>	<b>3</b>	<b>4</b>	<b>5</b>	<b>6</b>	<b>7</b>	<b>8</b>	<b>9</b>	<b>10</b>

9. I am satisfied with Swift River Energy's efforts to date to solicit public comment and feedback on its proposed Bala Falls Small Hydro Project.

	<b>Strongly Disagree</b>								<b>Strongly Agree</b>	
	<b>1</b>	<b>2</b>	<b>3</b>	<b>4</b>	<b>5</b>	<b>6</b>	<b>7</b>	<b>8</b>	<b>9</b>	<b>10</b>

10. I am satisfied that Swift River Energy has provided the public with sufficient information about its Bala Falls Small Hydro Project.

	<b>Strongly Disagree</b>								<b>Strongly Agree</b>	
	<b>1</b>	<b>2</b>	<b>3</b>	<b>4</b>	<b>5</b>	<b>6</b>	<b>7</b>	<b>8</b>	<b>9</b>	<b>10</b>

11. Any additional comments?

---

---

---

---

---

12. If you would like to be kept up to date regarding the proposed project's development, please provide your name and address below (including Post Office Box number, if applicable).

Name: \_\_\_\_\_

Address: \_\_\_\_\_

\_\_\_\_\_

Phone: \_\_\_\_\_

Email: \_\_\_\_\_

*Thank you for taking the time to complete this questionnaire.*

**Table D3 Summary of Responses to Comment Sheets, 2008 PIC**

<b>Questions 1-3, and 5 with Responses</b>	<b>Number of Responses</b>	<b>Total</b>
How did you learn about this Public Information Centre? <ul style="list-style-type: none"> <li>• Newspaper Advertisement</li> <li>• Flyer</li> <li>• Letter</li> <li>• Word of Mouth</li> <li>• Other: Responses included Chamber of Commerce and Moon River Property Owners Association</li> </ul>	23 8 15 28 14	88 <sup>1</sup>
Do you live in the Bala area? <ul style="list-style-type: none"> <li>• Permanent</li> <li>• Seasonal</li> <li>• Tourist</li> </ul>	43 31 0	74
Do you make use of the Bala Falls area? <ul style="list-style-type: none"> <li>• Scenic Viewing</li> <li>• Boating</li> <li>• Swimming</li> <li>• Fishing</li> <li>• Supplies/Provisioning</li> </ul>	62 45 45 27 20	199 <sup>2</sup>
Before coming to the PIC, my questions regarding this proposed hydroelectric generating station were: <ul style="list-style-type: none"> <li>• General (Project location, ownership, power output, timing, need, grid)</li> <li>• Aesthetics (landscape plan, beauty of/ impact on waterfalls, preserving natural look, impact to island)</li> <li>• Economic Impacts (long-term benefits, Cranberry Festival, merchants, tourism, traffic, benefits to the municipality)</li> <li>• Water levels</li> <li>• Environment (fish habitat, water quality)</li> <li>• Access/Safety (canoeing, portaging, swimming, bridge jumping, diving, current, wheelchair accessibility)</li> <li>• Purk's Place and Burgess Memorial Church</li> </ul>	26 19 18 13 11 10 4	101 <sup>3</sup>

***Respondents were then asked to circle the number under each of the following questions that best expresses their level of agreement, where "1" means strongly disagree and "10" means you strongly agree.***

<b>Statements 4, and 6-10</b>	<b>Response</b>	<b>Number of Responses</b>
I now have a better understanding of SREL's proposed Bala Falls Small	1	10
	2	2

<sup>1</sup> 58 People indicated one source only, 13 people indicated two sources and 2 indicated three or more sources.

<sup>2</sup> 12 People indicated one use, 17 people indicated two uses, 20 people indicated three uses, 17 people indicated four uses, and 5 people indicated five uses.

<sup>3</sup> Respondents provided more than one answer.



**Respondents were then asked to circle the number under each of the following questions that best expresses their level of agreement, where “1” means strongly disagree and “10” means you strongly agree.**

<b>Statements 4, and 6-10</b>	<b>Response</b>	<b>Number of Responses</b>	
Hydro Project.	3	4	
	4	2	
	5	9	
	6	4	
	7	10	
	8	20	
	9	6	
	10	6	
	After having attended this PIC, I am satisfied my questions have been addressed.	1	11
		2	8
3		5	
4		3	
5		7	
6		6	
7		9	
8		10	
9		2	
10		6	
The approach SREL proposes effectively addresses: a) Visual Aesthetics	1	18	
	2	6	
	3	4	
	4	3	
	5	5	
	6	5	
	7	6	
	8	10	
	9	3	
	10	5	
b) Noise Concerns	1	11	
	2	5	
	3	6	
	4	5	
	5	5	
	6	5	
	7	6	
	8	11	
	9	0	
	10	5	

**Respondents were then asked to circle the number under each of the following questions that best expresses their level of agreement, where “1” means strongly disagree and “10” means you strongly agree.**

<b>Statements 4, and 6-10</b>	<b>Response</b>	<b>Number of Responses</b>
c) Recreational Use	1	14
	2	7
	3	5
	4	8
	5	8
	6	4
	7	4
	8	9
	9	2
	10	3
d) Neighbouring Land Uses	1	12
	2	5
	3	8
	4	5
	5	10
	6	4
	7	4
	8	7
	9	1
	10	4
e) Safety Concerns	1	11
	2	4
	3	5
	4	8
	5	7
	6	5
	7	7
	8	12
	9	0
	10	2
I am satisfied with the scope of the environmental report SREL intends to prepare.	1	13
	2	3
	3	9
	4	4
	5	6
	6	5
	7	6
	8	11
	9	0
	10	3
I am satisfied with SREL’s efforts to date to solicit public comments and feedback on its proposed Bala Falls Small Hydro Project.	1	12
	2	10
	3	3
	4	1
	5	6
	6	3
	7	11
	8	9

**Respondents were then asked to circle the number under each of the following questions that best expresses their level of agreement, where “1” means strongly disagree and “10” means you strongly agree.**

Statements 4, and 6-10	Response	Number of Responses
	9	2
	10	6
I am satisfied that SREL has provided the public with sufficient information about the Bala Falls Small Hydro Project.	1	21
	2	4
	3	3
	4	3
	5	5
	6	6
	7	4
	8	10
	9	3
	10	4



**D16 Flyer “Trying to Set the Record Straight”**



# BalaFalls

small hydro project



[www.balafalls.ca](http://www.balafalls.ca)

## Our Proposed Bala Falls Small Hydro Project: Trying to Set the Record Straight

Swift River Energy Limited (SREL) has been working over the past year to engage the community about a plan to develop a small hydro project at Bala's North Dam, on the site where a power plant stood for the better part of the last century.

Our community outreach efforts have included holding widely advertised Public Information Centres, and seeking out and accepting numerous invitations to speak with community groups, large and small. Throughout, we've turned to professional engineers and biologists to answer the many questions the community has put to us. What follows is part of our continuing effort to try and keep the record straight by providing answers to the many questions we continue to be asked.

### [Isn't this project going to destroy the character of the Bala's dams?](#)

No. Our plan to build a powerhouse, in the area where a power plant once stood, will not have any effect on Bala's existing dams. Nothing will be done to MNR's North and South Dams.

### [Will the water required to run the power station effectively dry up Bala's North and South waterfall?](#)

No. The typical summer flow through Bala's North Dam will be maintained in order to support the age-old practice people have enjoyed making use of the area below Bala's North Dam.

During the summer months (May through September), the water required to operate the proposed power station will be drawn largely from the flows that traditionally pass through Bala's South Dam. While the flows at the South Dam will be reduced, the character of this waterfall will be substantially preserved, as it must in order to preserve identified aquatic habitats below it.

### [Will Swift River Energy run this new power station without regard to the impacts on the water levels upstream and downstream of Bala's three dams?](#)

No. The terms of the Lease Agreement Swift River Energy would be issued will clearly spell out our responsibilities to ensure lake levels above and below Bala's North and South dams are maintained within the strict limits set out in the Muskoka River Water Management Plan.

In addition to meeting these water level requirements, SREL will be required to ensure power station operations at Burgess Fall's is not compromised. SREL will also have to ensure that sufficient flows are maintained at Bala's North and South dams to ensure their character, their traditional recreational uses, and the fish habitats below them are preserved.

Swift River Energy would be held accountable if it were found to be in violation of any of these operating requirements.

Swift River Energy is confident that with our local operating "partner", Bracebridge Hydro, with its century-old experience, using modern remote controlled equipment, can meet all these requirements while being able to generate electricity at this site.

### [Will the water passing through your power station deplete oxygen levels in the water to the point that it will destroy fish habitat?](#)

No. Diverting water through the station's powerhouse does not deplete the water's oxygen needed to support fish habitat. In fact, there is every likelihood the station's tailrace will create conditions that foster additional desirable fish habitat.

### [Will a power station on this site make access to the waterfalls below Bala's North Dam impossible?](#)

No. In response to community comments, SREL's engineers confirmed that the powerhouse could be moved some 30 m further away from the edge of the North Dam's waterfall, and that it could be tucked into a "valley" in an effort to preserve the site's natural beauty and character. This new location will preserve access to the area around the waterfall.

### [Does this new site plan call for a park-like development on the island?](#)

SREL presented an artists landscape rendering at a second Open House this past August to illustrate SREL's commitment to restore the site. While there seemed to be some general appreciation for the concept, questions arose about details in the rendering. To address this, SREL will form a Local Landscape Advisory Committee to assist us in resolving the various interests people have in how this site might look, post-construction.

*Continued on back...*

### Has Bala been singled out for development?

No. However, the fact that Bala's North Dam was the site of a power station for the better part of last century certainly was a factor. According to information available on the Ministry of Natural Resources website, Bala is one of 17 sites released by the Government of Ontario in its efforts to develop new, clean, 'green', renewable sources of power generation to help fulfil our Province's commitment to shut down our old, polluting, coal-fired power stations.

### Is blasting going to damage buildings, pose a hazard to residents and damage Bala's tourism-dependent economy?

No. We are very aware of the Stone Church's heritage value. Blasting is expected to occur periodically over a 10 to 12-month period and will be so localized in nature as to pose no risk to nearby structures such as the heritage Stone Church, or, to people. In the unlikely event some damage does occur, SREL has committed to correcting it.

Blasting will not seriously disrupt traffic flows. Traffic interruptions will be occasional in nature and akin to the amount of time one might be stopped at a traffic light.

### Will construction activities put Purks Place out of business and impede access to the public dock?

The public docks will not be restricted or compromised in any way.

SREL has offered the owner of Purks Place financial compensation recognizing that the business will be closed, temporarily. Purks Place has also been offered additional support to relocate his docks to a safer location, post-construction.

### Is it true that traffic through Bala will be seriously disrupted because of lengthy road closures?

No. Road closures are expected to occur for only two one-night events (midnight to early morning between December and May) to install and remove a temporary two-lane bridge. To address concerns about emergency vehicle access during these two short periods, we will be working with the municipality to develop a suitable contingency plan.

Construction will also require that District Road 169 be narrowed to a single lane for two two-week periods. To minimize the disruption to the community, these two road narrowings are scheduled to occur during Bala's less trafficked off-season, between December and May.

Swift River Energy is committed to addressing the community's legitimate concerns about our proposed project. We are confident this project can be developed in a manner in keeping with Bala's legendary reputation, and, that it can make a lasting contribution to Bala's local economy.

Respectfully,



John Wildman | Co-Chair | Swift River Energy Limited

While the intersection of Bala Falls Road and District Road 169 near the Stone Church will have to be closed for the 12 to 18 month period of construction, we are in discussions with the municipality to ensure alternative access from Bala Rd to District Road 169 will be available.

### Winter snowmobile traffic is important to Bala's economy. What effect will construction have on this winter traffic?

We are well aware of the importance snowmobiling plays in Bala's winter economy. We are in active discussions with the municipality to ensure a safe route across the island is available through the winter construction period.

### What benefits will the local community realize from this project?

Our Bala Falls Small Hydro Project offers a number of short and long-term benefits to the local community. First, building this power station will require about 50 person years of labour to complete. We expect that a large part of the project's \$22 million capital costs will be spent locally employing local trades, retaining local equipment suppliers, and, drawing on local services such as restaurants, motels and gas stations. Over the long term, we have every confidence this modern, 21st century small hydro project can become a significant attraction that draws new visitors to Bala.

### Is it true this project is a "done deal"? If that is the case, isn't all of this just some public relations gimmick?

This project is not a "done deal" and the commitments we are making are not some public relations gimmick. All of our claims about this project and the commitments we are making to the community will be detailed in an extensive Environmental Screening Report being prepared by professional engineers and environmental scientists. Once completed, this Report will be subject to careful review by provincial and federal regulatory authorities, as well as the public.

Should the authorities approve the Report, it will become the basis of a binding agreement between SREL and the Ministries of Environment, and Natural Resources. In effect, the Report would spell out many of the conditions by which development and operation of this proposed facility would be permitted.

**Back to the future**  
building on **Bala's** legacy



**D17 Summary of Consultation with  
Purk's Place Boat House and Marina  
During Phase II**

**Table D8  
Summary of Phase Two Consultations with Purk's Place Boat House and Marina**

<b>To/From/With</b>	<b>Date of Contact/Response</b>	<b>Correspondence</b>	<b>Details of Consultation</b>	<b>Relevant Section(s) of Environmental Screening Report</b>
To SREL	April 10, 2008	Email Phone	Requested information on the current status of Project and any potential impacts to Purk's Place business	Effect on Local Businesses – Section 5.3.8; and Public Access – Section 6.3.1
From SREL	April 11, 2008	Email and phone call	Responded that SREL is completing a feasibility study to address options to address concerns raised at 2007 PIC. Informed Mr. Purkis that there would be no construction in 2008, but that some geotechnical investigations will be conducted the following week. SREL stated an interest in talking to him and other area stakeholders over the next month	Section 3.4.2. and 3.5.5: Stakeholder Consultation
With SREL	May 7, 2008	Meeting	<ul style="list-style-type: none"> <li>• Rough sketches of the proposed configuration of new plan were discussed.</li> <li>• Purk's Place indicated that there would be implication on the business, in particular water access/docking.</li> <li>• Short term options of locating a trailer at divers point to maintain operations throughout the construction period were suggested but rejected by Purk's Place as not being feasible. A second option of closing for the construction season and SREL providing compensation for lost revenues was also suggested.</li> <li>• Long term options to move the docks to "divers point" on the other side of the rail tracks were discussed as was possibly a shoreline path under the tracks to connect the docks to the building.</li> <li>• Concerns regarding lack of road access during construction period were also raised.</li> <li>• Purk's Place agreed to get back to SREL with possible impacts and start discussions regarding mitigation/compensation.</li> </ul>	Effect on Local Businesses – Section 5.3.8; and Public Access – Section 6.3.1
From SREL	July 11, 2008	Email	<ul style="list-style-type: none"> <li>• Enquired as to whether he had any thoughts on what implications the project would have on the business</li> <li>• Offered to meet or discuss on phone.</li> </ul>	N/A
To SREL	July 15, 2008	Email	<ul style="list-style-type: none"> <li>• Purk's Place indicated he had sent email to Chamber of Commerce and Mayor and was concerned neither knew about</li> </ul>	N/A

**Table D8  
Summary of Phase Two Consultations with Purk's Place Boat House and Marina**

To/From/With	Date of Contact/ Response	Correspondence	Details of Consultation	Relevant Section(s) of Environmental Screening Report
			new plan. • Requested all further discussions be in writing.	
From SREL	July 15, 2008	Email	• Indicated that hadn't met with Mayor until after discussion with him and will not be meeting with Chamber of Commerce for a few weeks, in order to get his issues outlined before getting too far along in the process. • Agreed to formalizing correspondence as requested.	N/A
From SREL	August 7, 2008	Email	Requested a meeting to discuss compensation with respect to construction of the Project.	N/A
To SREL	August 8, 2008	Email	Agreed to a meeting. Requested information on the Project, in particular, a timeline for construction. Attached letter from Stone Church owner.	N/A
From SREL	August 8, 2008	Email	<ul style="list-style-type: none"> <li>• Proposed time for meeting.</li> <li>• Estimated construction period to be 12 to 18 months starting in late fall 2009.</li> <li>• SREL has applied to MNR for rights to lease crown land adjacent to Purk's Place. This are will need to be fenced off during construction for safety purposes.</li> <li>• Bala Falls Road will need to be closed between Highway 169 and Purk's Place for construction activities. Local traffic would be rerouted to the south end of road.</li> <li>• In-river work will be required adjacent to property for intake and cofferdaming will require removal of docks in area.</li> <li>• A structural condition survey will be done for heritage building – Stone Church.</li> <li>• Attached invitation flyer for 2008 PIC.</li> </ul>	Aquatic Biota and Habitat – Sections 5.2.7, 5.2.8 and 6.2.5; Wildlife – Sections 5.2.10 and 6.2.6; Effect on Local Businesses – Section 5.3.8; Public Access – Section 6.3.1
From SREL	August 9, 2008	Email	Request to reschedule meeting	N/A
To SREL	August 12, 2008	Email	Confirmed new meeting time	N/A
With SREL	August 13, 2008	Meeting	Meeting to discuss possible compensation for the construction period and options for relocating his docks. Option to move docks to Diver's Point was discussed and financial compensation	N/A

**Table D8  
Summary of Phase Two Consultations with Purk's Place Boat House and Marina**

<b>To/From/With</b>	<b>Date of Contact/ Response</b>	<b>Correspondence</b>	<b>Details of Consultation</b>	<b>Relevant Section(s) of Environmental Screening Report</b>
			for loss of business during construction period.	
From SREL	September 5, 2008	Email	Requested information on portage route that apparently uses business' docks.	Portaging: Section 2.2.5.10
To SREL	September 8, 2008	Email	Referred SREL to YMCA Camp Pine Crest	N/A
To Hatch Energy	September 8, 2008	Email	<p>Stated concerns included</p> <ul style="list-style-type: none"> <li>• Impact to a school of Small Mouth Bass which has lived under the dock for at least 101 years. Also crayfish, mink, ducks and frogs sharing the water space. How will they survive this project?</li> <li>• Navigability for Lake Muskoka boaters will be restricted on the waterway in front of Purk's Place. How will Purk's Place survive this project without access to the waterway?</li> <li>• Navigability will be restricted on the waterway in front of Purk's Place dock for canoe trips portaging from Lake Muskoka to the Moon River and back. How will this centuries old portage survive this project?</li> </ul>	<p>Aquatic Biota and Habitat – Sections 5.2.7, 5.2.8 and 6.2.5; Wildlife – Sections 5.2.10 and 6.2.6; Effect on Local Businesses – Section 5.3.8; Public Access – Section 6.3.1; Tourism and Recreation – Sections 5.3.7 and 6.3.6.</p>
From SREL	September 9, 2008	Email	<ul style="list-style-type: none"> <li>• SREL indicated it had reviewed submission Purk's Place had made to District Council regarding project.</li> <li>• Enquired as to where portage route for canoes is.</li> </ul>	<p>Public Access – Section 6.3.1; Tourism and Recreation – Sections 5.3.7 and 6.3.6.</p>
From SREL	November 25, 2008	Email	<ul style="list-style-type: none"> <li>• SREL had been informed by MNR that Purk's Place would like another meeting to discuss project and impacts on business.</li> <li>• Requested meeting, possibly at MNR offices with MNR present.</li> </ul>	N/A
To SREL	November 25, 2008	Email	<ul style="list-style-type: none"> <li>• Agreed to meeting with SREL and MNR, with his consultant present as well who will be representing Purk's Place.</li> </ul>	N/A



**Table D8  
Summary of Phase Two Consultations with Purk's Place Boat House and Marina**

<b>To/From/With</b>	<b>Date of Contact/Response</b>	<b>Correspondence</b>	<b>Details of Consultation</b>	<b>Relevant Section(s) of Environmental Screening Report</b>
From SREL	November 27, 2008	Email	Will there be someone in a position of authority present from SREL at the meeting? Topics to be discussed include: <ul style="list-style-type: none"> <li>• compensation during construction,</li> <li>• business interruption,</li> <li>• impact of project on stress levels of owner,</li> <li>• where will Purk's Place be financially during and after construction</li> <li>• What effect with construction have on Purk's Place</li> <li>• What can be done about docking before and after construction</li> </ul>	N/A
From SREL	November 27, 2008	Email	Suggestion of dates for meeting. <ul style="list-style-type: none"> <li>• Confirmed to have someone with authority present at meeting.</li> <li>• Agreed to scope of discussion.</li> </ul>	N/A
From SREL	Nov 28/09	Email	Requested what venue would be best, MNR offices or other?	N/A
From SREL	Dec 4/09	Email	<ul style="list-style-type: none"> <li>• Follow-up that meeting time is still good and requested confirmation on what venue would be best since have not yet had a reply.</li> </ul>	N/A
To SREL	December 4, 2008	Email	<ul style="list-style-type: none"> <li>• Request to postpone meeting.</li> </ul>	N/A
From SREL	December 4, 2008	Email	<ul style="list-style-type: none"> <li>• Request to reschedule meeting for Dec. 15th</li> </ul>	N/A
To SREL	December 4, 2008	Email	<ul style="list-style-type: none"> <li>• Request to postpone until January 2009.</li> </ul>	N/A
From SREL	January 14, 2009	Email	<ul style="list-style-type: none"> <li>• Request to schedule meeting prior to issuing EA to agencies for comment with MNR present.</li> </ul>	N/A
From SREL	February 23, 2009	Email	<ul style="list-style-type: none"> <li>• Request to schedule meeting since have had no response.</li> </ul>	N/A
To SREL	Mar 3/09	Email	<ul style="list-style-type: none"> <li>• Indicated that he would be available to meet on Mar 12, and requested attendee list and agenda.</li> </ul>	N/A
From SREL	Mar 3/09	Email	<ul style="list-style-type: none"> <li>• March 12<sup>th</sup> good for SREL. Requested venue. MNR not available on 12<sup>th</sup>. Requested how he would like to proceed.</li> </ul>	N/A
From SREL	Mar 9/09	Email	<ul style="list-style-type: none"> <li>• Requested confirmation on venue.</li> </ul>	N/A
To SREL	Mar 9/09	Email	<ul style="list-style-type: none"> <li>• Confirmed that date should be Thurs 12<sup>th</sup> not Friday. Requested</li> </ul>	N/A

**Table D8  
Summary of Phase Two Consultations with Purk's Place Boat House and Marina**

To/From/With	Date of Contact/Response	Correspondence	Details of Consultation	Relevant Section(s) of Environmental Screening Report
			confirmation that "someone who can make decisions on behalf of SREL" be present. Requested information on SREL's specific obligations/requirement to Purk's Place.	
From SREL	Mar 9/09	Email	<ul style="list-style-type: none"> <li>• Confirmed date</li> <li>• Confirmed a board member (co-vice chairman) will be present along with project manager, however, unlikely that decisions will be made at the meeting. Meeting would involve discussing and determining impacts and providing possible options for mitigation/compensation of impacts.</li> <li>• Attached general arrangement drawing, construction sequencing, and construction schedule.</li> <li>• Indicated that "specific obligations and requirements towards Purk's Place are not specifically outlined by agencies."</li> </ul>	N/A
To SREL	Mar 9/09	Email	<ul style="list-style-type: none"> <li>• Indicated that he felt intimidated by SREL at meeting in fall of 2008 and suggested that SREL had indicated that they had no obligation to compensate or make any arrangements for future business but it is strictly voluntary.</li> <li>• Requested what the impacts would be and outline the proposed mitigation is.</li> </ul>	N/A
From SREL	Mar 10/09	Email	<ul style="list-style-type: none"> <li>• Apologized if he felt intimidated with the other SREL representative.</li> <li>• Requested that SREL and Purk's Place start anew and try to move forward.</li> <li>• Indicated that SREL has not sent an official offer as there has been no feedback from Purk's Place from the verbal offer at the last meeting or on what the impacts or mitigation would be expected based on the meetings and correspondence.</li> <li>• Outlined construction impacts to be that the docking facilities could not be used due to safety considerations but there may be some ability to run the business from the building only. SREL has previously offered financial compensation for lost income for operations during construction if not able to operate and request last 3 years of financial records to assess this amount.</li> <li>• Long term impacts: since intake will be adjacent to docks, docks should be relocated for safety reasons. This could be</li> </ul>	Section 5.3.8 - Local Businesses, and Section 6.3.1 - Public Access.

**Table D8**  
**Summary of Phase Two Consultations with Purk's Place Boat House and Marina**

To/From/With	Date of Contact/ Response	Correspondence	Details of Consultation	Relevant Section(s) of Environmental Screening Report
			<ul style="list-style-type: none"> <li>done to Diver's point.</li> <li>• SREL are considering allowing Purk's Place and the Stone Church designated parking on the land near diver's point and around the intake.</li> <li>• Requested what the venue for the meeting will be again.</li> </ul>	
To SREL	Mar 11/09	Email	<ul style="list-style-type: none"> <li>• Confirmed meeting for Mar 12/09 at Purk's Place</li> </ul>	N/A
From SREL	Mar 11/09	Email	<ul style="list-style-type: none"> <li>• Unfortunately the co-vice chair no longer able to attend however, project manager and / or Chief Operating Officer can attend. Please confirm how you would like to proceed.</li> </ul>	N/A
To SREL	Mar 11/09	Email	<ul style="list-style-type: none"> <li>• Would prefer to reschedule</li> </ul>	N/A
From SREL	Mar 23/09	Email	<ul style="list-style-type: none"> <li>• Requested new meeting date.</li> </ul>	N/A
From SREL	Mar 26/09	Email	<ul style="list-style-type: none"> <li>• Requested new meeting date since no reply to earlier email.</li> </ul>	N/A
To SREL	Mar 31/09	Email	<ul style="list-style-type: none"> <li>• Indicated that waiting for information from MNR before meeting.</li> </ul>	N/A
From SREL	Apr 7/09	Email	<ul style="list-style-type: none"> <li>• Requested meeting</li> </ul>	N/A
To SREL	Apr 8/09	Email	<ul style="list-style-type: none"> <li>• Indicated that he was still awaiting information from MNR before proceeding. Asked to postpone.</li> </ul>	N/A
From SREL	Apr 17/09	Email	<ul style="list-style-type: none"> <li>• Asked if received information yet. Indicated that we had been given information from MNR that Diver's Point was no longer a viable option to relocate docks.</li> <li>• Requested meeting.</li> </ul>	N/A
From SREL	Apr 19/09	Email	<ul style="list-style-type: none"> <li>• Requested meeting Thurs 23rd.</li> </ul>	N/A
To SREL	Apr 19/09	Email	<ul style="list-style-type: none"> <li>• Indicated that at a meeting in August 2008 "Purk's Place was at the mercy of SREL", and that compensation "was offered out of the goodness of SREL's heart".</li> <li>• Requested specific obligations and requirements for Purk's Place regarding the SREL proposed project.</li> </ul>	N/A
From SREL	Apr 22/09	Phone call and follow-up email	<ul style="list-style-type: none"> <li>• Discussed that SREL would like to move forward to determine what mitigation/compensation would be appropriate and suggested in-person meeting with possibly impartial moderator/MNR/or someone of Purk's Place recommendation present to alleviate concerns expressed.</li> </ul>	N/A
To SREL	Apr 22/09	Email	<ul style="list-style-type: none"> <li>• Let us proceed in writing by either Canada post or email. SREL</li> </ul>	N/A

**Table D8  
Summary of Phase Two Consultations with Purk's Place Boat House and Marina**

To/From/With	Date of Contact/Response	Correspondence	Details of Consultation	Relevant Section(s) of Environmental Screening Report
			to ask questions and Purk's Place to reply and with additional questions.	
From SREL	Apr 30/09	Email	<ul style="list-style-type: none"> <li>• Provided list of 14 questions with respect to future plans for business, preferred method of operation during construction period and long-term, amount of monetary compensation, etc.</li> <li>• Again suggested that a face to face meeting to discuss the project and how we can work together would be productive.</li> </ul>	N/A
From SREL	May 6/09	Email	<ul style="list-style-type: none"> <li>• Follow up on questions since no response.</li> <li>• Indicated SREL having board meeting and any input would be appreciated when discussing possible mitigation /strategies.</li> </ul>	N/A
To SREL	May 6/09	Email	<ul style="list-style-type: none"> <li>• Confirmed receipt of email and will respond when able to, however do not expect to have completed by board meeting. Since will be busy until the latter part of May.</li> </ul>	N/A
From SREL	May 7/09	Email	<ul style="list-style-type: none"> <li>• Requested that he concentrate on the just the construction period questions and short term impacts for now to get discussion going.</li> </ul>	
From SREL	May 14/09	Email and registered mail	<ul style="list-style-type: none"> <li>• Request for meeting with SREL, MNR, CP Rail and Purk's Place.</li> </ul>	N/A
From SREL	May 14/09	Email and registered mail	<ul style="list-style-type: none"> <li>• Provided a formal offer of compensation for lost business during the construction season.</li> </ul>	N/A
From SREL	May 20/09	Email	<ul style="list-style-type: none"> <li>• Follow-up on meeting request and included topics to be discussed:</li> <li>• Outline of proposed project including layout and timing</li> <li>• Construction impacts to CPRail property and tenant's business (Purk's Place)</li> <li>• Long-term operational impacts to CPRail property and tenant's business</li> <li>• Possible mitigation and/or compensation strategies for these impacts</li> <li>• Next steps.</li> </ul>	Section 6.3.8.3 – CP Rail Abutments and Pier; and Section 5.3.8 – Effects to Local Businesses.
To SREL	May 21/09	Email	<ul style="list-style-type: none"> <li>• Following up on May 14/09 emails</li> <li>• Suggest that try to meet after Labour Day to set a time and location that is mutually convenient.</li> </ul>	N/A



**Table D8**  
**Summary of Phase Two Consultations with Purk's Place Boat House and Marina**

<b>To/From/With</b>	<b>Date of Contact/Response</b>	<b>Correspondence</b>	<b>Details of Consultation</b>	<b>Relevant Section(s) of Environmental Screening Report</b>
To SREL	May 26/09	Email	<ul style="list-style-type: none"> <li>• Provided answer to many of the 14 questions provided on April 30.</li> <li>• Indicated that Purk's Place would prefer to operate the business as it has been operated for the past more than 100 years.</li> <li>• Operating season is from May 1 to Oct 31 with additional scaffolding rentals during Nov, Dec, Mar and April. Maintenance and repairs are done during Nov and Mar.</li> <li>• Would prefer to operate the business as it currently is. If that isn't possible would like to operate in a similar setting.</li> <li>• Requested compensation for interruption of business as well as compensation for the loss of use of Purk's Place on Lake Muskoka;</li> <li>• Would require an extensive professional public relations and advertising campaign to resuscitate Purk's Place relationships with customers if close down for a year during construction.</li> </ul>	N/A
From SREL	May 28/09	Email	<ul style="list-style-type: none"> <li>• Thanked him for the responses and enquired as to the percentage of overall revenue attributed to the docks.</li> </ul>	N/A
From SREL	Jun 1/09	Email	<ul style="list-style-type: none"> <li>• Referred Mr. Purkis to a list of specific emails that outline the possible impacts to the business since Aug 2008 and the number of requests to meet to discuss the issues in further detail.</li> <li>• Indicated that this is the time in the approvals process to provide the input into the impacts and required compensation.</li> <li>• Provided further clarification on the proposed construction schedule and possible parking options.</li> </ul>	Construction Activities: Section 5.1.
To SREL	Jun 8/09	Email	<ul style="list-style-type: none"> <li>• Indicated that working on completing more answers to those provided previously.</li> <li>• Reiterated email of July 15<sup>th</sup> 2008 regarding the Mayor not knowing about the changed project after the original meeting with Mr. Purkis on May 7, 2008, and the discussion with SREL during the August 2008 meeting.</li> <li>• Indicated that he awaits a response as to what alternative arrangement can be made with respect to the business and docking requirements for the short and long term.</li> <li>• Objective is to continue with the business and as such, will</li> </ul>	N/A

**Table D8**  
**Summary of Phase Two Consultations with Purk's Place Boat House and Marina**

<b>To/From/With</b>	<b>Date of Contact/Response</b>	<b>Correspondence</b>	<b>Details of Consultation</b>	<b>Relevant Section(s) of Environmental Screening Report</b>
			need to be relocated in a manner that is seamless to its clientele and product offering.	
	Jun 11/09	Meeting	<ul style="list-style-type: none"> <li>• SREL dropped by Purk's Place during some flow studies to discuss how we can move forward.</li> <li>• Indicated the percentage of business attributed to the docks.</li> </ul>	N/A
From SREL	Sep 8	Email, regular mail and registered mail	<ul style="list-style-type: none"> <li>• Provided a second formal offer to relocate Purk's Place to a similar location on Lake Muskoka prior to construction. Negotiations are ongoing.</li> </ul>	N/A

**D18 Summary of Consultation with  
the Stone Church  
During Phase II**

**Table D9  
Phase Two Consultation with the Owners of the Stone Church**

<b>Date of Contact/Response</b>	<b>Consultation</b>	<b>Details of Consultation</b>	<b>Response/Relevant Section(s) of Environmental Screening Report</b>
Apr 11/08	Phone call from SREL	Ensured Mr. Chan that project would not encroach on his land. Inquired as to how much water would be used and if enough to generate. SREL indicated that just completing feasibility studies and appears to be feasible.	N/A
Dated: July 23, 2008 Received from W. Purkis: Aug 8, 2008	Written Correspondence from Mr. Chan	Concerns raised within the letter included <ul style="list-style-type: none"> <li>• effects to tourism</li> <li>• potential impacts to Burgess Memorial Bala Presbyterian Stone Church during construction</li> </ul>	Tourism and Recreation – Sections 5.3.7 and 6.3.6; Effect on Local Businesses – Section 5.3.8; Cultural/Heritage Resources and Archaeological Sites – Section 5.3.12.
August 8, 2008	E-mail from SREL	Provided details on the proposed project and emphasized that the undertaking did not involve the construction of any new dams. Provided information on the scope of the environmental assessment as it pertains to Burgess Memorial Bala Presbyterian Stone Church.	Cultural Resources/Heritage and Archaeological Sites – Sections 2.2.6 and 5.3.12.
August 13, 2008	Meeting with SREL during PIC	Mrs. Chan and Mr. Choy attended the PIC and met with SREL to discuss the Project at that time.	N/A
September 4, 2008	Meeting	SREL had a meeting with Mr. Chan and Mr. Choy (Mr. Chan's business partner) during which Mr. Chan summarized his concerns as <ul style="list-style-type: none"> <li>• possible damage to his building during blasting</li> <li>• parking no longer available within the project area</li> <li>• aesthetics/noise/use and enjoyment pertaining to the flow of water within the south channel</li> <li>• fish in the south channel</li> <li>• humidity due to increased water levels in the south channel.</li> </ul> Mr. Chan indicated that he is open to discussion as the project moves forward.	Cultural/Heritage Resources and Archaeological Sites – Section 5.3.12; Public Access – Section 6.3.1; Hydrology – Section 6.2.2; Aquatic Biota and Habitat – Sections 5.2.7, 5.2.8 and 6.2.5
September 17, 2008	Written correspondence	<ul style="list-style-type: none"> <li>• Increased noise once the "white" noise of the</li> </ul>	<ul style="list-style-type: none"> <li>• SREL has agreed to consider using land not utilized for the</li> </ul>

**Table D9  
Phase Two Consultation with the Owners of the Stone Church**

<b>Date of Contact/Response</b>	<b>Consultation</b>	<b>Details of Consultation</b>	<b>Response/Relevant Section(s) of Environmental Screening Report</b>
	from SREL	<p>rushing water is reduced.</p> <ul style="list-style-type: none"> <li>• Aesthetics of reduced water flow through south channel</li> <li>• Overall reduction in the quality of site i.e. feng shui</li> <li>• Reduced parking where new intake will be located</li> <li>• Impact on fish in south channel</li> <li>• Humidity of in the building (stone church) if water levels are increased</li> <li>• Condition of building i.e. damage from the blasting during construction.</li> </ul>	<p>intake for parking for either public or designated parking for Purk's Place and the Stone Church.</p> <ul style="list-style-type: none"> <li>• SREL's biologist consultants have studied the channel and will be recommending a minimum flow be maintained in the south channel to satisfy fisheries requirements.</li> <li>• Since the dams are already in place, no new dam will be constructed and no raising of the water level will take place. Therefore, our project should have no impact on the humidity in the building.</li> <li>• SREL's consultants have indicated that current blasting techniques are such that blasting can occur with a few feet without causing damage but adjusting the magnitude of the blasts. In addition, SREL agrees to have a mutually acceptable engineer perform a condition survey on the existing conditions of the building and surrounding structures. This engineer will then monitor effects during construction and have the contractor change procedures as necessary should there be any impact on the structures.</li> </ul>



**D19 Summary of Consultation  
with Municipal Agencies  
During Phase II**

**Table D10**  
**Phase Two Consultations with the Township of Muskoka Lakes and District Municipality of Muskoka**

<b>Date</b>	<b>Name</b>	<b>Agency</b>	<b>Correspondence</b>	<b>Summary of Stated Issue(s)</b>	<b>Response</b>	<b>Date of Response</b>	<b>Relevant Sections of the ESR</b>
July 21, 2008	Muskoka District Solicitor	District of Muskoka	Written Correspondence	Prior to the PIC of 2008, SREL sent an invitation to the District solicitor along with details of the intended use of District lands, and the extent of the public consultation activities to be undertaken.	N/A	N/A	Section 3: Public Consultation
Aug 14/08	All district councillors	DMM	Email	Provided copy of flyer to be distributed to public and stakeholders to set the record straight on misinformation in community.	N/A	N/A	Section 3: Public Consultation
Sep 3/08	David Royston, District Solicitor	DMM	Letter	Provided copies of various submissions received at District council on Sep 2/08 regarding project.	N/A	N/A	N/A
October 14, 2008	Various Representatives	District Municipality of Muskoka	Presentation	Topics included the two Alternatives for the Project and Avoidance/Mitigation of Issues	N/A	N/A	N/A
Jan 9/09	Mayor Susan Pryke and Walt Schmid	TML	Email	Provided copy of Heritage Report as per Township resolution	N/A	N/A	N/A
Feb 10/09	Walt Schmid	TML	Email/letter	Outlines issues with the south dam idea presented by opposition members.	N/A	N/A	N/A
Feb 12/09	David Royston	DMM	Email/letter	Outlines issues with south dam idea presented by opposition members.	N/A	N/A	N/A
Feb 17/09	David Royston	DMM	Email/letter	Follow-up letter to Feb 12/09 letter with respect to oppositions revised option.	N/A	N/A	N/A
April 19/09	District Chair Gord Adams	DMM	Email/letter	Update on project.	N/A	N/A	N/A
May 26/09	Tony White & David Royston	DMM	In-person meeting	Update on project	N/A	N/A	N/A

**Table D10****Phase Two Consultations with the Township of Muskoka Lakes and District Municipality of Muskoka**

<b>Date</b>	<b>Name</b>	<b>Agency</b>	<b>Correspondence</b>	<b>Summary of Stated Issue(s)</b>	<b>Response</b>	<b>Date of Response</b>	<b>Relevant Sections of the ESR</b>
May 26/09	Mayor Pryke, Councillors Mary Grady and Pat Arney and Walt Schmid	TML	In-Person meeting	Update on project	N/A	N/A	N/A
Aug 6/09	District Chair Gord Adams	DMM	Email/letter	Update on project	N/A	N/A	N/A
Aug 6/09	Mayor Susan Pryke	TML	Email/letter	Update on project	N/A	N/A	N/A

**D20    Presentation to the District  
         Municipality of Muskoka,  
         October 14, 2008**



# Bala Falls

small **hydro** project

Presentation to:  
**District of Muskoka Council Meeting**

October 14, 2008



**Back** to the **future**  
building on **Bala's** legacy

# Agenda

---

- Project Overview
- Renewable Energy Benefits
- Two Siting Options
- Project Timing
- Avoiding / Mitigating Impacts



**BalaFalls**  
small **hydro** project

**Back** to the **future**  
building on **Bala's** legacy



# Project Overview



**Bala Falls**  
small hydro project

**Back to the future**  
building on Bala's legacy

# Project Overview

---

- Bala Falls
    - 1 of 17 MNR sites released to date
    - 71 more sites under consideration
  - Harmonized Environmental Screening Process
    - Ontario Environmental Assessment Act (MOE, MNR)
    - Canadian Environmental Assessment Act (TC, DFO)
  - Muskoka River Water Management Plan
    - Strict water level controls
- Extensive Communications Outreach/Consultation
- open houses, website, flyers, Q&A's
  - stakeholder meetings (Township, MRPOA, CofC, OPG)



**BalaFalls**  
small hydro project

**Back to the future**  
building on **Bala's** legacy

# Renewable Energy

---

- Ontario Government Directive:
  - To review proposed Integrate Power System Plan focusing on energy and conservation.
  - Eliminate coal-fired generation by 2014 → reduce CO<sub>2</sub> emissions up to 30 megatonnes
- The Township of Muskoka Lakes Official Plan:
  - "...any new electric power facilities...shall be permitted within all land use designation through the Township of Muskoka Lakes provided that such development satisfies the provision of the Assessment Act."



**BalaFalls**  
small hydro project

**Back to the future**  
building on **Bala's** legacy



# Comparison of Options

## Option #1



- abuts North Falls
- Crown land only
- smaller footprint but taller
- eliminates traditional access
- will require safety fencing

## Option #2



- 35m from North Falls
- Crown + District land
- site permits low-profile layout
- minimal fencing required
- preserves traditional access

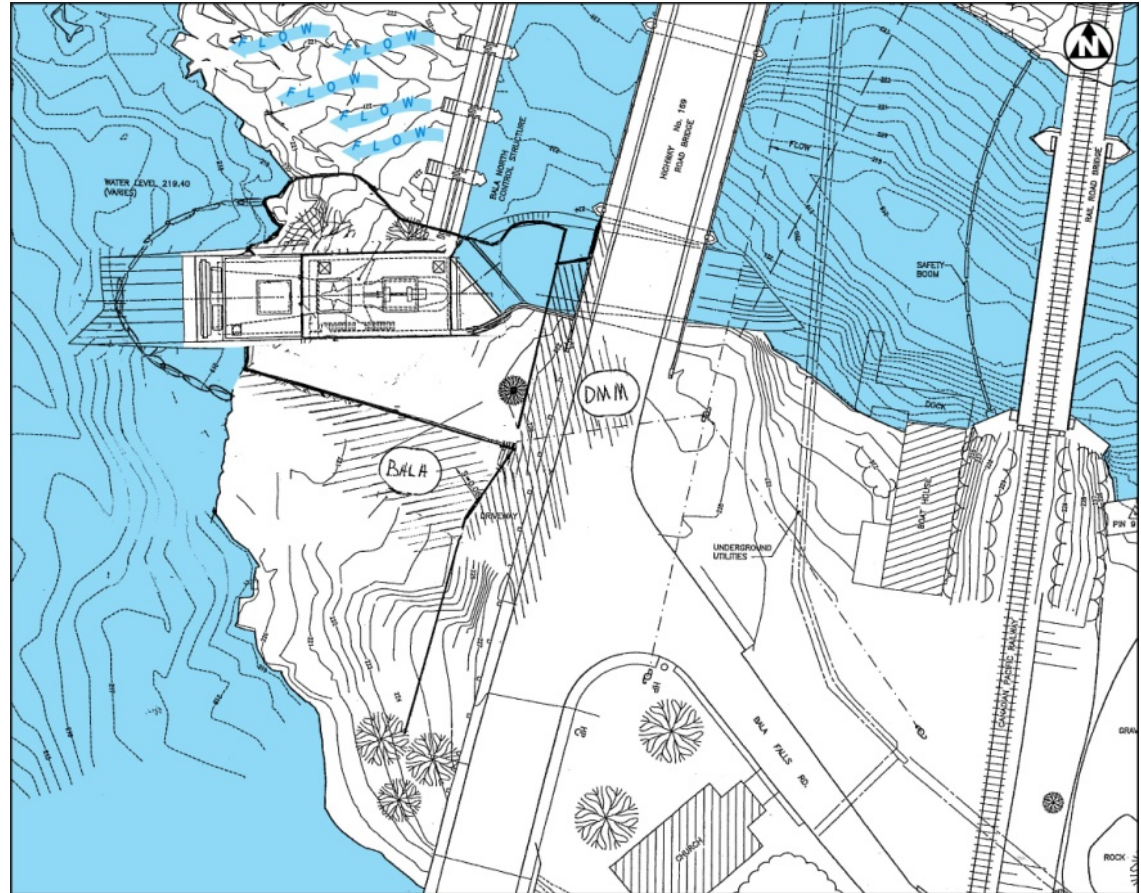


**BalaFalls**  
small hydro project

Back to the future  
building on Bala's legacy

## Option 1 (Aug. '07)

- Intake/Powerhouse both on west side of highway.
- No tunneling under road.
- Will still entail blasting and rock removal from site.



Alternative 1 General Arrangement Rev. C



**BalaFalls**  
small hydro project

**Back to the future**  
building on **Bala's** legacy



## Option 2 (Aug. '08)

- Intake: east of Dr 169.
- Powerhouse/Tailrace: west of Dr. 169.
- Requires excavation under Rd 169.
- Site restored & landscaped for public use.



*Local Landscape Advisory Committee  
to determine site features.*



**BalaFalls**  
small hydro project

**Back to the future**  
building on Bala's legacy



# Project Timing -

---

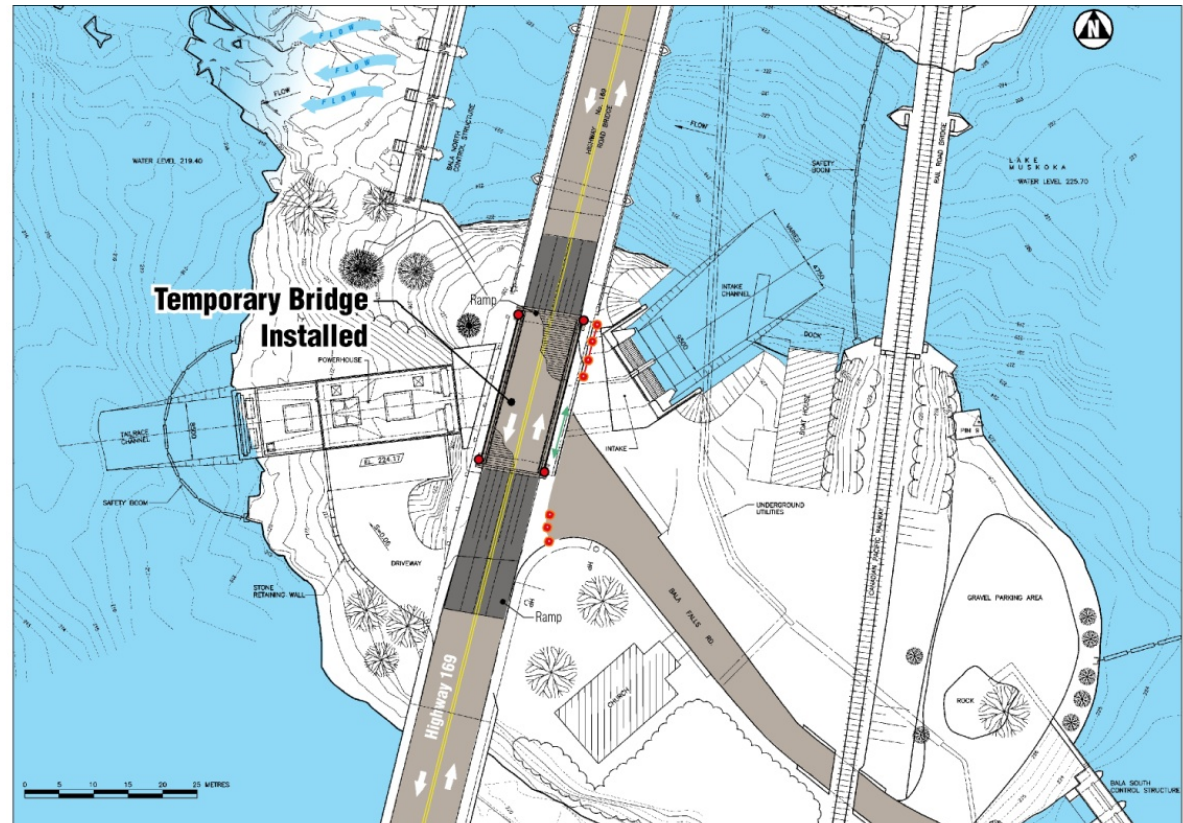
- Complete ESR Nov '08
- Notice of Completion Feb '09
- Location Approval Jun '09 (anticipated)
- Complete Detailed Engineering Oct '09
- Begin Construction Nov '09
  - 4 - 2 wk road narrowings
  - 2 – 1 night road closures
  - Road work completed by May'10
- Project In-service May '11



# Minimizing Construction Impacts

## Road Access

- Install two-lane temporary bridge.
- Close Bala Falls Rd / Dr. 169 intersection (north end).
- Road closures restricted to off-season.



**Bala Falls**  
small hydro project

Back to the future  
building on Bala's legacy

# Minimizing Construction Impacts

## Adjacent Landowner/Occupants

- Sensitive blast-monitoring program
- Financial compensation for business disruption
- Assistance to relocate Purks Place boat access



**BalaFalls**  
small hydro project

**Back to the future**  
building on **Bala's** legacy





# Bala Falls

small hydro project

**Back to the future**  
building on **Bala's** legacy

**D21 Summary of Consultation  
with Provincial Agencies  
During Phase II**

**Table D11  
Phase Two Consultations with Provincial Agencies**

<b>Date</b>	<b>Name</b>	<b>Agency</b>	<b>Correspondence</b>	<b>Summary of Stated Issue(s)</b>	<b>Response</b>	<b>Date of Response</b>	<b>Relevant Sections of the ESR</b>
September 16, 2008	Various Representatives	MNR and OPG	Meeting	HE presented the Project on behalf of SREL and discussed the integration of the Project into the Lake Muskoka and Bala Reach operating plans identified in the Muskoka River Water Management Plan. SREL acknowledged that the final proposed operating plan should be submitted for review and comment by both MNR and OPG. SREL also stated its intention to submit an amendment to the existing WMP to include the North Bala GS, and to identify any high or low flow indicators or triggers.	A draft Operations Plan was submitted to the MNR and OPG (This plan was subsequently withdrawn)	November, 2008	Water Management Plan – Section 9.
December 15, 2008	Various Representatives	MNR and OPG	Teleconference	Discussion of the operations plan including water flow and level control.	This plan was subsequently withdrawn.	N/A	Water Management Plan – Section 9
January 12, 2009	Dilek Postacioglu – MOE (EAAB), Jim Chan – CEAA, and Jennifer McCarthy - DFO	MOE, CEAA and DFO	Teleconference	MOE (EAAB) stressed the importance of documenting and addressing agency comments within the ESR.	SREL will address agency comments within the ESR	N/A	N/A
February 19, 2009	Various Representatives	DFO and MNR	Teleconference	Discussions regarding fish habitat and plant and dam operations	SREL committed to operating the dams during the spawning period to enhance	N/A	Water Management Plan – Section 9



**Table D11  
Phase Two Consultations with Provincial Agencies**

<b>Date</b>	<b>Name</b>	<b>Agency</b>	<b>Correspondence</b>	<b>Summary of Stated Issue(s)</b>	<b>Response</b>	<b>Date of Response</b>	<b>Relevant Sections of the ESR</b>
					spawning conditions		
March 6, 2009	Paige Campbell	Ministry of Culture	Written Correspondence	In response to submission of the Stage 2 Archaeological Assessment to the Ministry, Ms. Campbell responded that the Ministry concurred with recommendations of the archaeologist.	N/A	N/A	N/A
Apr 23/09	Dielek Postacioglu, Steve Taylor	MOE, MNR	Teleconference	General Project update and review of outstanding issues prior to ESR release.	N/A	N/A	N/A
Aug 6/09	Norm Miller, MPP		Email/letter	Project update	N/A	N/A	N/A
Aug 6/09	Steve Taylor, Trevor Griffin	MNR	Email/letter	Project update	N/A	N/A	N/A

**D22 Summary of Consultation  
with Federal Agencies  
During Phase II**

**Table D12  
Phase Two Consultations with Federal Agencies**

<b>Date</b>	<b>Name</b>	<b>Agency</b>	<b>Correspondence</b>	<b>Summary of Stated Issue(s)</b>	<b>Response</b>	<b>Date of Response</b>	<b>Relevant Sections of the ESR</b>
January 12, 2009	Jim Chan – CEEA, Dilek Postacioglu – MOE (EAAB), Jennifer McCarthy - DFO	CEEA, DFO and MOE	Teleconference	<p>The following topics/issues were initiated by CEEA:</p> <ul style="list-style-type: none"> <li>• Triggering the need for a federal EA – none of the federal agencies have confirmed a trigger.</li> <li>• Documentation of discussions with agencies such as Transport Canada within the ESR</li> </ul> <p>DFO offered discussion of the following:</p> <ul style="list-style-type: none"> <li>• Walleye spawning downstream of the North Bala Dam</li> <li>• Adequacy of operation of the South Dam to assist spawning in exciting and proposing new areas</li> <li>• Pre-construction North and South Dam flows</li> <li>• The nature of the relationship between the North Dam Flows and velocities in downstream spawning beds.</li> </ul>	SREL has addressed these topics within the ESR	N/A	Aquatic Biota and Habitat: 5.2.7, 5.2.8 and 6.2.5; Section 3.4.3: Regulatory Agencies Consultation, Agency Consultation: 3.5.6.
February 19, 2009	Various Representatives	DFO, TC and MNR	Teleconference	<p>DFO had concerns regarding fish habitat and plant and dam operations</p> <p>TC stated that there are navigational issues within the north channel adjacent to existing</p>	SREL committed to operating the dams during the spawning period to enhance spawning conditions	March 12, 2009	Water Management Plan – Section 9

**Table D12  
Phase Two Consultations with Federal Agencies**

<b>Date</b>	<b>Name</b>	<b>Agency</b>	<b>Correspondence</b>	<b>Summary of Stated Issue(s)</b>	<b>Response</b>	<b>Date of Response</b>	<b>Relevant Sections of the ESR</b>
				seasonal business infrastructure	TC would provide comments on the ESR		
March 12, 2009	Allan Robertson, Senior NWP Officer	TC	Written Correspondence	<ul style="list-style-type: none"> <li>• Navigation within an upstream safety zone</li> <li>• Existing issues with Purk's Place facility that would limit water access</li> <li>• Rescue procedures or considerations for persons or vessels caught in the intake</li> <li>• Discussion within the ESR regarding the placement of upstream and downstream safety booms</li> </ul>	TC comments incorporated in the ESR	N/A	Effect on Public Use and Access: 5.3.1 and 6.3.1; Public Safety in the Vicinity of the Project: 5.3.2, and 6.3.2.
Mar 19/09	Various representatives	CEAA, MOE, DFO, TC, MNR	Teleconference.	<ul style="list-style-type: none"> <li>• Transport Canada and DFO feedback regarding fish habitat compensation.</li> </ul>	Mitigation incorporated into ESR	N/A	Aquatic Biota and Habitat: 5.2.7, 5.2.8 and 6.2.5.
Mar 27/09	Jennifer McCarthy, Derrick Moggy	DFO	Teleconference	<ul style="list-style-type: none"> <li>• DFO concerns</li> <li>• Determination of HADD</li> </ul>	Mitigation incorporated into ESR	N/A	Aquatic Biota and Habitat: 5.2.7, 5.2.8 and 6.2.5.

**D23 First Nation Consultation**

---

DATE:	October 15, 2008	TIME:	12:00pm	PROJECT NO.:	327078
BETWEEN:	Blaine Commandant Wahta Mohawk First Nation (705) 762-2354	AND:	Kathleen Vukovics		
SUBJECT:	Bala Falls Small Hydro Project				

---

KEYWORD(S):	Wahta Mohawk	REF FILE:	
COPIES TO:			

---

I spoke with Chief Blaine Commandant of the Wahta Mohawk First Nation. I asked if he had received our letter regarding the Bala Falls Small Hydro Project. He stated that he did and that he has been keeping abreast of the material available from Swift River Energy Limited. I asked if he had any questions or comments regarding the project that I could either answer for him or pass along to our Environmental Assessment Coordinator, who would then send him a response. He said he had some concerns. These are as follows:

- Turbidity and water quality changes
- Water level changes and management within the Water Management Plan
- Fish habitat

He also stated he was concerned about assurances that Swift River could not start the construction of the project and abandon it prior to its completion.

The Chief also suggested that Swift River utilize the tailrace area to develop spawning habitat, especially for pickerel.

I told the Chief that our Environmental Assessment Coordinator would send a letter to respond to his concerns.

KMV:KMV  
Attachment(s)/Enclosure



Telephone Conversation

1  
Rev. 0, Page 1

---

DATE: October 15, 2008      TIME: 11:50 am      PROJECT NO.: 327078  
BETWEEN: Rhonda Williams      AND: Kathleen Vukovics  
Moose Deer Point First Nation  
(705) 375 - 5209  
SUBJECT: Bala Falls Small Hydro Project

---

KEYWORD(S): Moose Deer      REF FILE:  
COPIES TO:

---

I spoke with Rhonda Williams of the Moose Deer Point First Nation Band Office who confirmed that Chief Barron King had received our letter of August 7, 2008 and stated that Moose Deer Point "had no issues regarding the project".

KMV:KMV  
Attachment(s)/Enclosure

October 16, 2008

Chief Blaine Commandant  
Wahta Mohawk First Nation  
PO Box 260  
Bala, ON P0C 1A0

Dear Chief Commandant:

**Subject: North Bala Hydroelectric Project**

Thank you very much for your call yesterday to Kathleen Vukovics of our office. It was noted that during that call you expressed the following concerns in relation to the proposed hydroelectric project in Bala:

- Possible project impacts on water quality including turbidity
- Water level changes and assurance that water management would be within the existing Muskoka River Water Management Plan
- Possible project impact on fish habitat
- Assurance that Swift River Energy Limited would be able to complete the project and not abandon an unfinished plant.

It was also noted that you suggested that the tailrace area be utilized to develop spawning habitat, particularly for pickerel.

During construction, a cofferdam will be erected in the tailrace area. This will allow work to be completed under dry conditions, reducing any effect on turbidity that may occur. During the construction period, the flows along the river will not be changed. No impact on flows or water levels will occur during the construction period.

The proposed project must operate within the rules of the existing Muskoka River Water Management Plan. During operation, fluctuations in Lake Muskoka levels and Bala Reach levels will be within the Normal Operating Zones which presently exist in the Muskoka River Water Management Plan.

Studies have been undertaken to assist in evaluating potential impact of the project on fish habitat. Where impacts are identified, methods of mitigation have to be proposed, before any approvals are obtained. The details of the potential impacts and the mitigation measures proposed will be detailed in the environmental screening report which is currently being prepared. Mitigation measures may include the development of spawning areas in the tailrace or other suitable areas as you suggested. I will ensure that a copy of the screening report is made available to you.

Please rest assured that Swift River Energy has the resources to undertake and complete the proposed project. As part of the competitive bidding process to the MNR, the owners of Swift River Energy had to provide firm evidence of their ability to finance the proposed development. The project will not be abandoned in a partially constructed state.

I trust that I have responded to your concerns adequately. I look forward to receiving comments on the screening report after its distribution or at any time that you wish to contact me. I may be contacted by phone or fax at the numbers listed on the top of the page or by email at [tclarke@hatchenergy.com](mailto:tclarke@hatchenergy.com).

Thank you again for your comments and interest in the project. They are greatly appreciated.

Yours very truly,

Trion Clarke

:

Ref.: Document2  
Attachment(s)/Enclosure

cc: Steve Taylor, MNR  
Ian Baines, Swift River Energy  
Bruce MacTavish, Hatch Energy

<b>Table D13 Phase Two Consultations with Wahta Mohawk and Moose Deer Point First Nations</b>			
<b>First Nation</b>	<b>Date</b>	<b>Type</b>	<b>Summary of Communication</b>
Moose Deer Point First Nation	October 15, 2008	Telephone Conversation	A representative of the Moose Deer Point First Nation Band Office confirmed that Chief Barron King had received our letter of August 7, 2008 and stated that Moose Deer Point "had no issues regarding the project".
Wahta Mohawk First Nation	October 15, 2008	Telephone Conversation	Chief Blaine Commandant of the Wahta Mohawk First Nation confirmed that he had received our letter regarding the Bala Falls Small Hydro Project. He submitted the following comments regarding the project: <ul style="list-style-type: none"> <li>• Turbidity and water quality changes</li> <li>• Water level changes and management within the WMP</li> <li>• Fish habitat.</li> </ul> He stated he was concerned about assurances that Swift River could not start the construction of the project and abandon it prior to its completion. The Chief also suggested that Swift River utilize the tailrace area to develop spawning habitat, especially for pickerel.
Wahta Mohawk First Nation	October 16, 2008	Written Correspondence	HE submitted a response to the Chief and First Nation addressing the concerns that were raised during the telephone conversation of October 15, 2008.
Wahta Mohawk First Nation	December 2, 2008	Telephone Conversation	SREL contacted Chief Commandant to inquire regarding any outstanding issues and to offer a meeting with the First Nation, SREL and MNR. It is anticipated that this meeting will take place in early 2009.
Wahta Mohawk First Nation	December 3, 2008	Email	SREL informed Chief Commandant regarding the release of the Screening Report in early 2009.